

Using Windows 2000

logging in

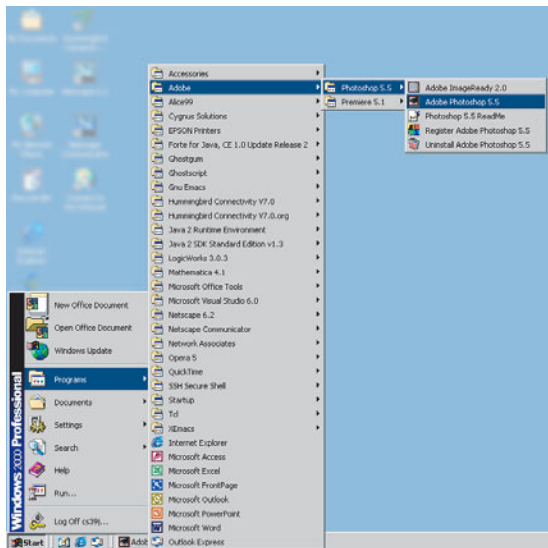


Press CTRL+ALT+DEL.



Type in your username and password. Make sure the "Log on to" drop-down box is set to "EECS". Click OK.

starting Photoshop



To start Photoshop, click
Start > Programs > Adobe > Photoshop 5.5 >
Adobe Photoshop 5.5

accessing your home drive



Double-click My Computer.
Double-click on the X: drive.

logging in

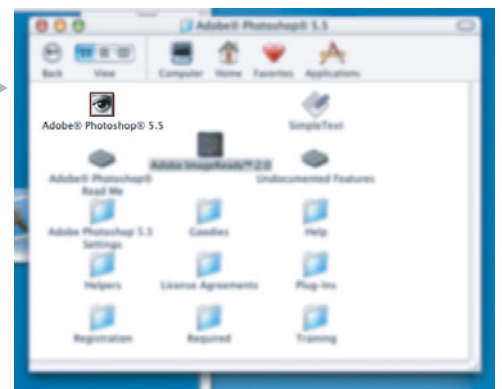
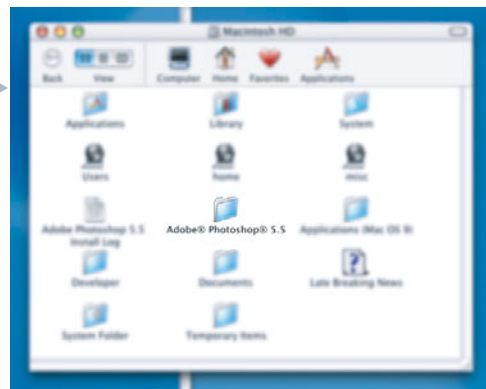


Type in your username and password.
Click "Log In."

starting Photoshop



Open Macintosh HD >
Adobe Photoshop 5.5 >
Adobe Photoshop 5.5.



accessing your home drive



Open Macintosh HD >
click "Home" on the
toolbar.

