

Accessing the EECS 40 Newsgroup

I. Introduction

A newsgroup is a forum for communicating with other people. It is basically a “virtual bulletin board”.

In this document, I describe how to access the newsgroup in two ways:

1. From unix through the mail program, pine.
2. From windows through Netscape.

I show you how to log into your cory.eecs.berkeley.edu (cory) named unix account from the SSH program in windows. I used the EECS 40 lab computers to do this. There are other ways to login to cory as well. Check with your TAs or stop by my office hours. The advantage of using Unix is that you can access the newsgroup from any computer that is connected to the internet and has a copy of the SSH program. This is not true for your windows EECS account. **Due to security reasons, you cannot access your windows account from windows machines not connected to the EECS network.**


If you want to download the SSH program for your windows machine at home, try <http://software.berkeley.edu> and download SSH Secure Shell 3.2.2.

II. Accessing the newsgroup from UNIX

Follow these steps to setup and access the newsgroup from UNIX. We assume that you already have a named unix account on cory.

1. Log into your EECS 40 windows account either from the windows machines in 199 Cory hall or your lab computers.



2. Double click on the SSH Secure Shell icon:  on the desktop. You will see figure 1 popup.

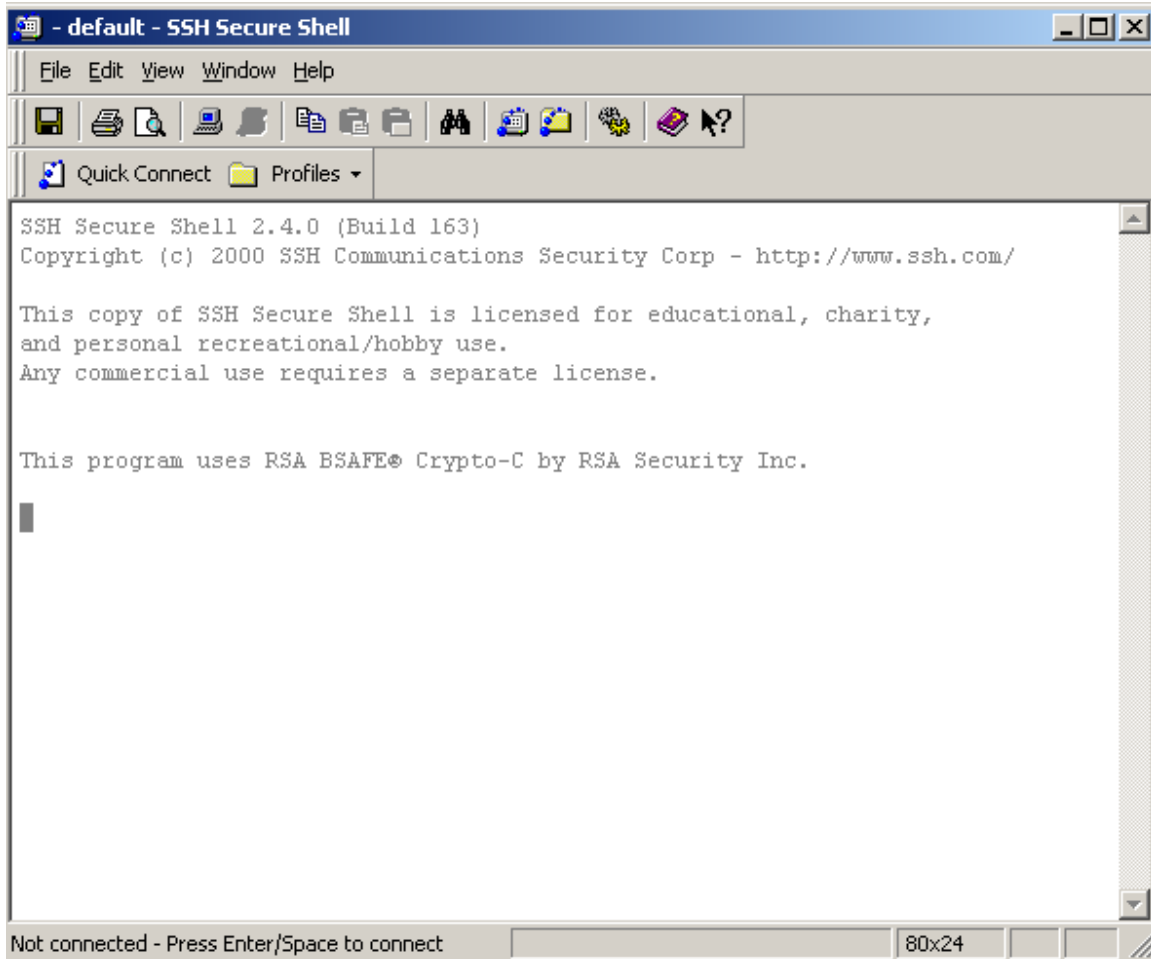


Figure 1. The SSH window pops, ready to connect.

3. Click on **File** -> **Connect** or press Enter/Space to connect. You will see figure 2 popup.

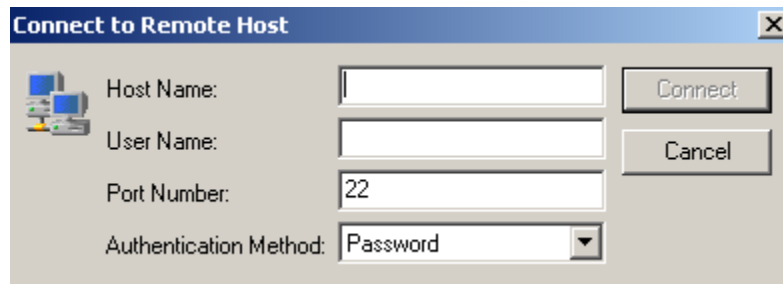


Figure 2. SSH asks for host and user name information

4. Enter cory.eecs.berkeley.edu as the host name and your cory unix username, as shown in figure 3.

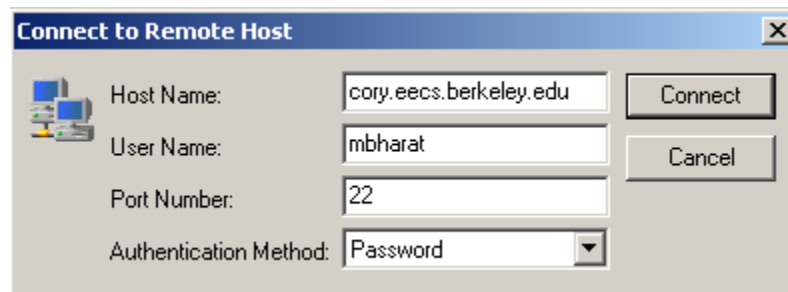


Figure 3. Enter your user name

5. Click on Connect and SSH asks for a password. Type it in, you can't see it for security reasons. Once you log in, you will be in unix. If you login successfully, go on to step 6. If not, ask me or the TAs in office hours.

6. Assuming you are able to log into cory.eecs.berkeley.edu, type "pine" and press Enter at the prompt. You will see a welcome greeting message. Press "E" to exit the greeting. You should see figure 4.

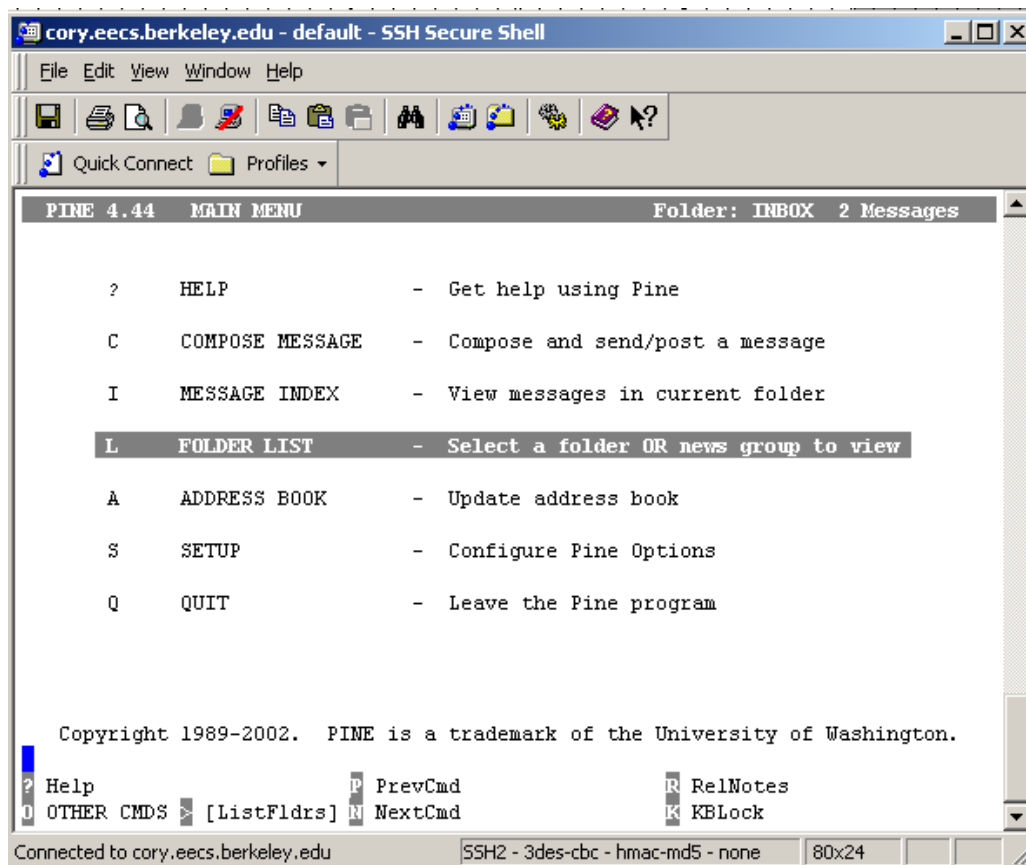


Figure 4. Main menu in Pine

7. Scroll down to Setup and press return. You should see figure 5.

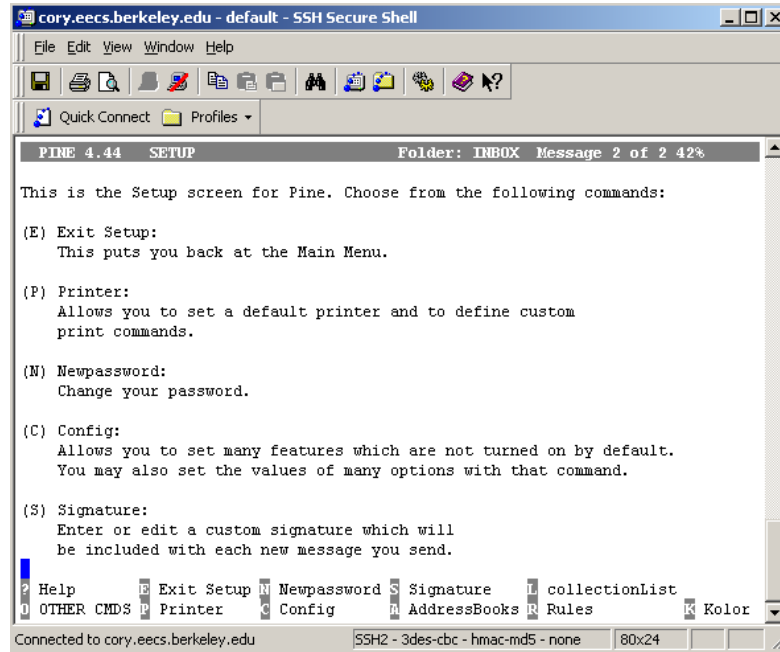


Figure 5. Pine setup options

8. Press C for config. Scroll down to nntp-server and press C for change-val. Type agate.berkeley.edu and press return. The result is shown in figure 6.

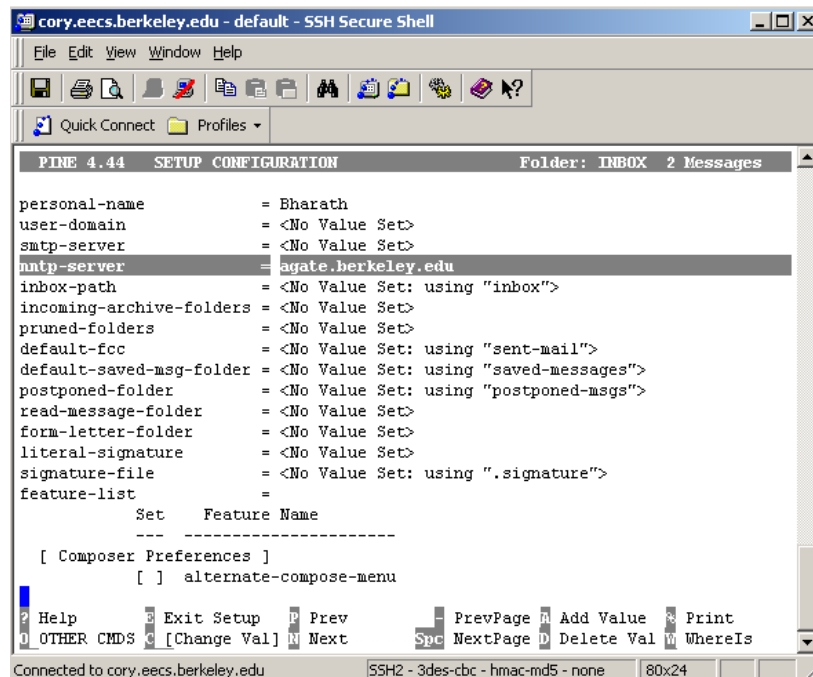


Figure 6. nntp-server field changed

9. Press E to exit config and commit the changes. You should return to the main menu, press enter to look at the folder list. Choose “News on agate.berkeley.edu/nntp”. You should not see anything since you have not subscribed to any newsgroups yet. To subscribe to the EECS 40 newsgroup, press A (for add). Type ucb.class.ee40 and press return. The result is shown in figure 7.

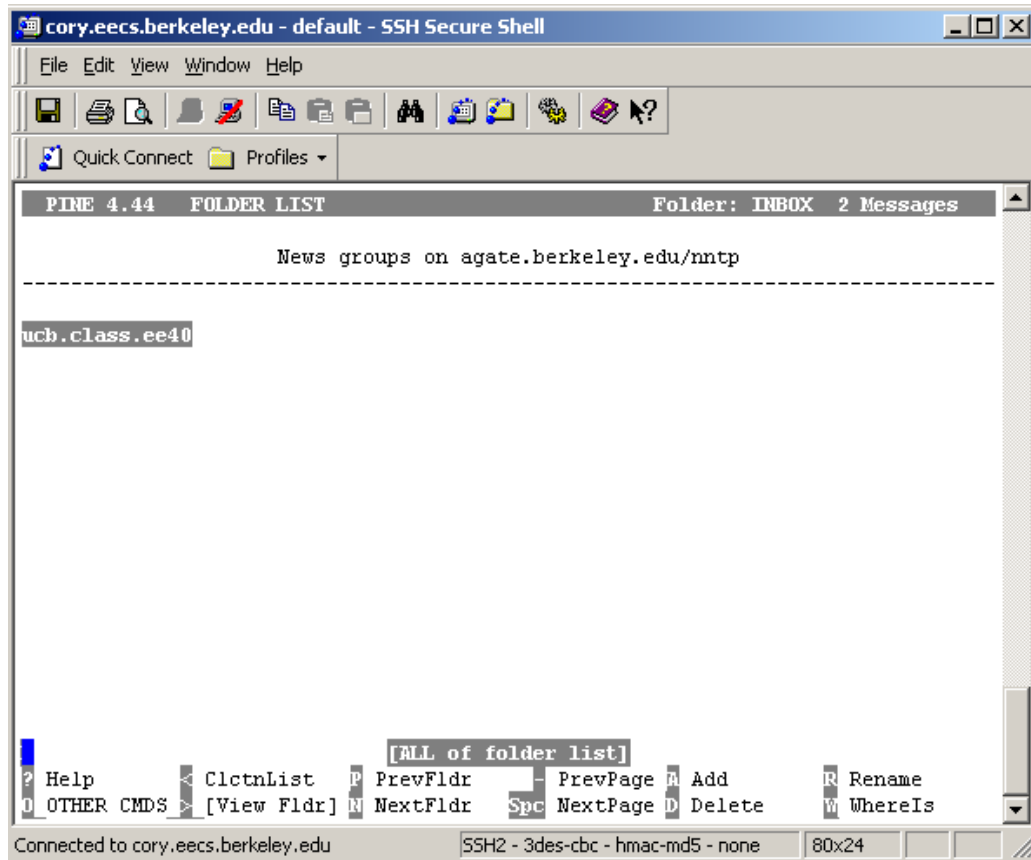


Figure 7. All set!


10. Press enter to access the newsgroup. You will see a whole bunch of messages. To post to the newsgroup, press “C” for compose and have fun...

PLEASE REMEMBER: DO NOT ABUSE THE NEWSGROUP. BE COURTEOUS! If you have any questions or problems, please contact me or the TAs. We will be more than happy to help you. If you can't find us, ask someone in the class who has already set up access to the newsgroup.

Suppose you want to check your newsgroup from windows, then read section III of this document. You can access the newsgroup, but only from windows computers connected to the cory eecs network. I personally don't like this option since it is not available everywhere, but I guess some people prefer the fancy GUIs (graphical user interface).

III. Accessing the newsgroup from your cory windows account

I used netscape here. You can set up any mail program to access the newsgroup.

1. Double click on netscape 7.0 on the desktop to start netscape. Click on the mail icon in the top left corner of netscape: . You should see figure 8. Choose the Newsgroup account. Click Next >.

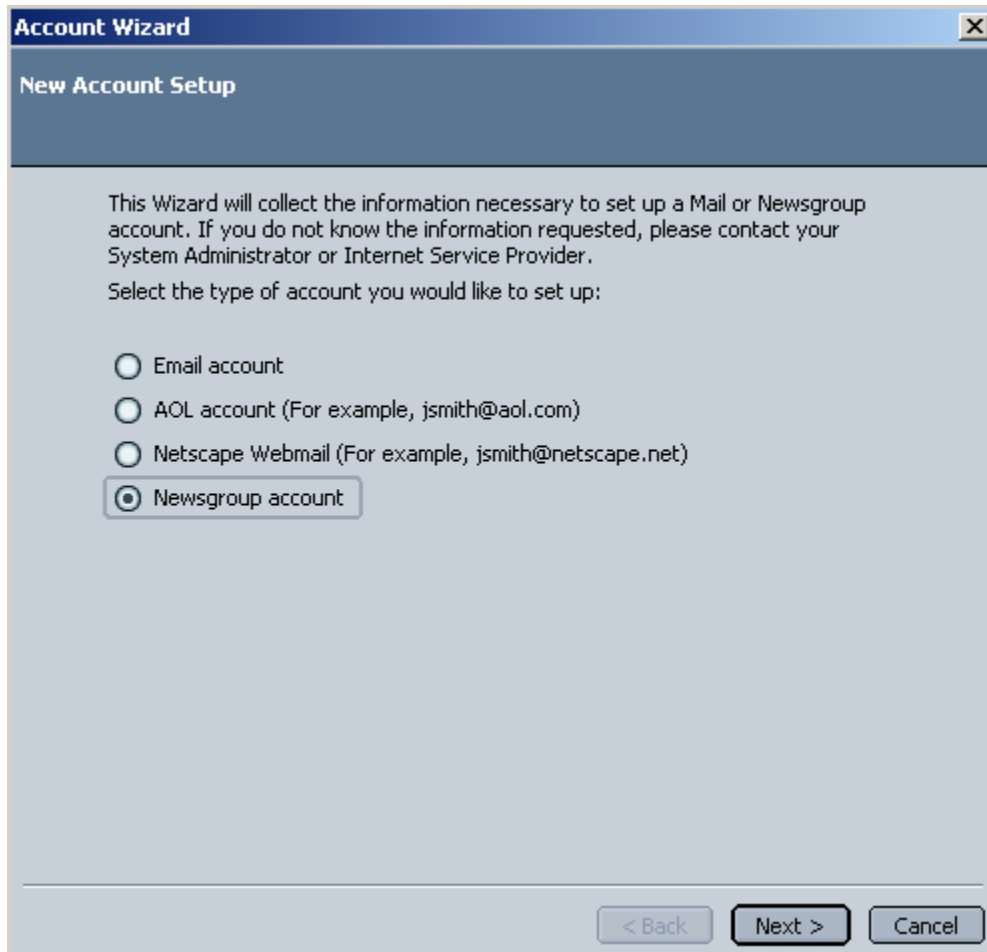


Figure 8. Getting ready to setup the newsgroup in netscape

2. Enter your name and email information. Click Next >.

3. Now, enter “agate.berkeley.edu” for Newsgroup Server as shown in figure 9.

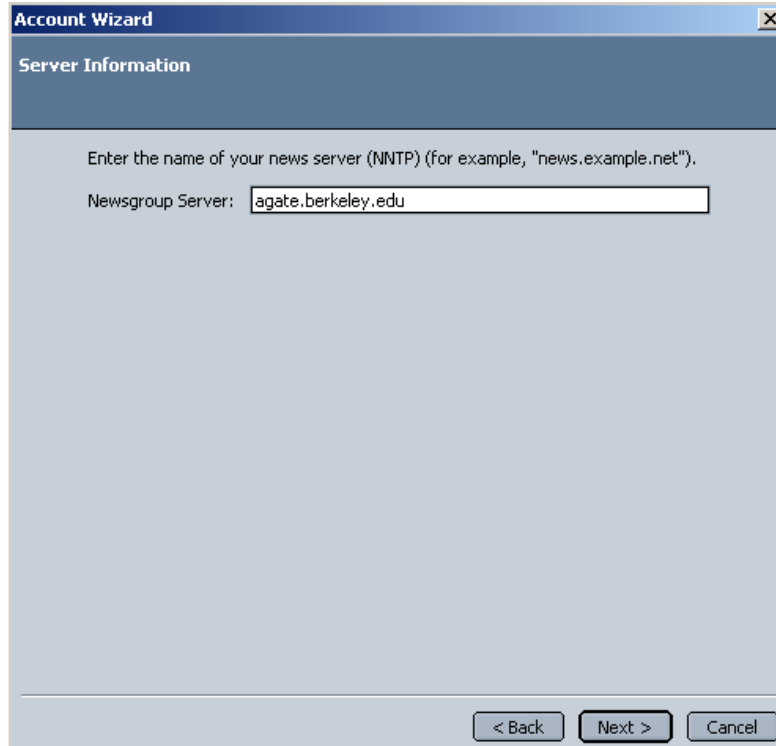


Figure 9. The correct news server.

4. Click Next >. Verify all information that Netscape has and click on Next >. You should see figure 10.

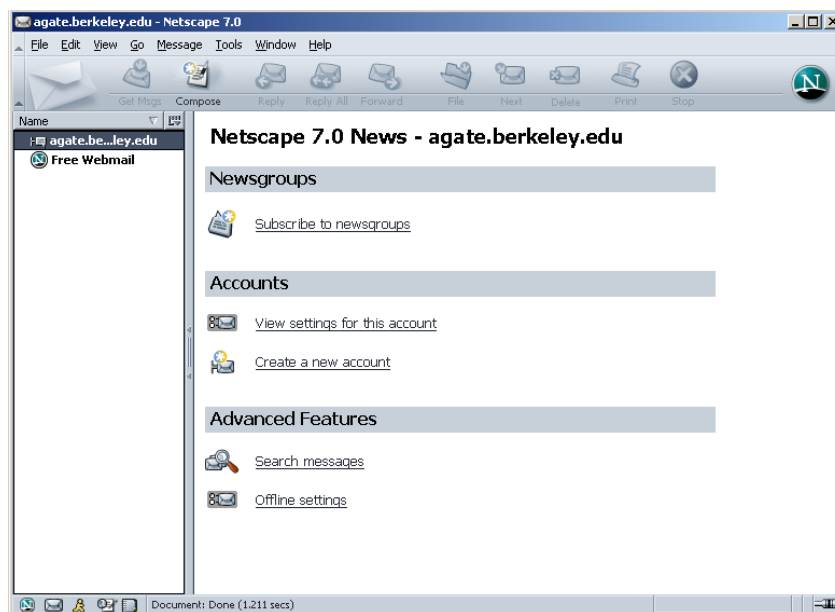


Figure 10. Almost done!

5. Click “Subscribe to newsgroups” under Newsgroups in the right window. You will see netscape compiling a list of all the newsgroups in UC Berkeley. Just type in ucb.class.ee40 in the “Show items that contain” box. Check ucb.class.ee40 (I don’t know what ucb.class.ee40i is!) and click ok, as shown in figure 11.

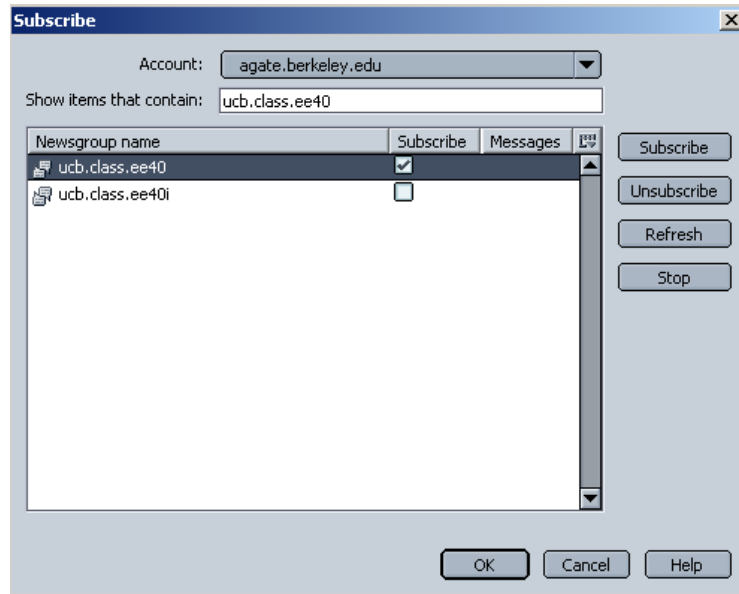


Figure 11. Choose ucb.class.ee40

6. Once you have done this, you should see ucb.class.ee40 under agate.berkeley.edu in the left window. Click on the newsgroup and you will see figure 12. You can now interact with people subscribed to the newsgroup.

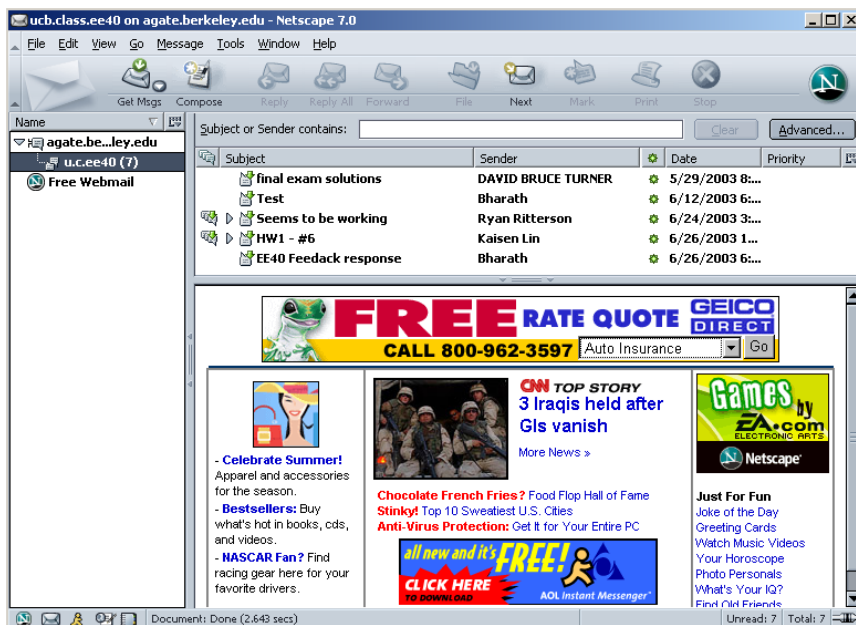


Figure 12. All set!

IV. Conclusion

This document has shown you two ways to access the newsgroup: through Unix and Windows. I personally prefer the former because of its universality, but its all a matter of taste. If you have questions, comments, suggestions for improvement of this document, please email me: mbharat@cory.eecs.berkeley.edu