

Setting up EECS 40 computer accounts

Bharathwaj Muthuswamy*

June 26, 2003

1. Introduction

This document shows you how to setup your Windows and UNIX accounts. You need these accounts later in the semester for the CalBOT project and for running SPICE simulations respectively. Although you could work on the Calbot from UNIX or SPICE from windows, it is difficult. So, both accounts are necessary.

I highly recommend getting cardkey access to Cory hall. That way, you can get into Cory hall after 7:00 on weekdays and on weekends. Cory hall has a nice study lounge, vending machines and of course, computers!

If you want to get a cardkey, stop by 391 Cory hall. I have already submitted the list of students in EECS 40 (including the waitlist), so you shouldn't need my signature. If you do, stop by my office hours. The cardkey costs \$20. You will get \$15 back at the end of the summer.

In the next two sections of this document, I show how to set up your windows accounts and unix accounts respectively.

*Email corrections/additions to: mbharat@cory.eecs.berkeley.edu

2. Setting up your windows account

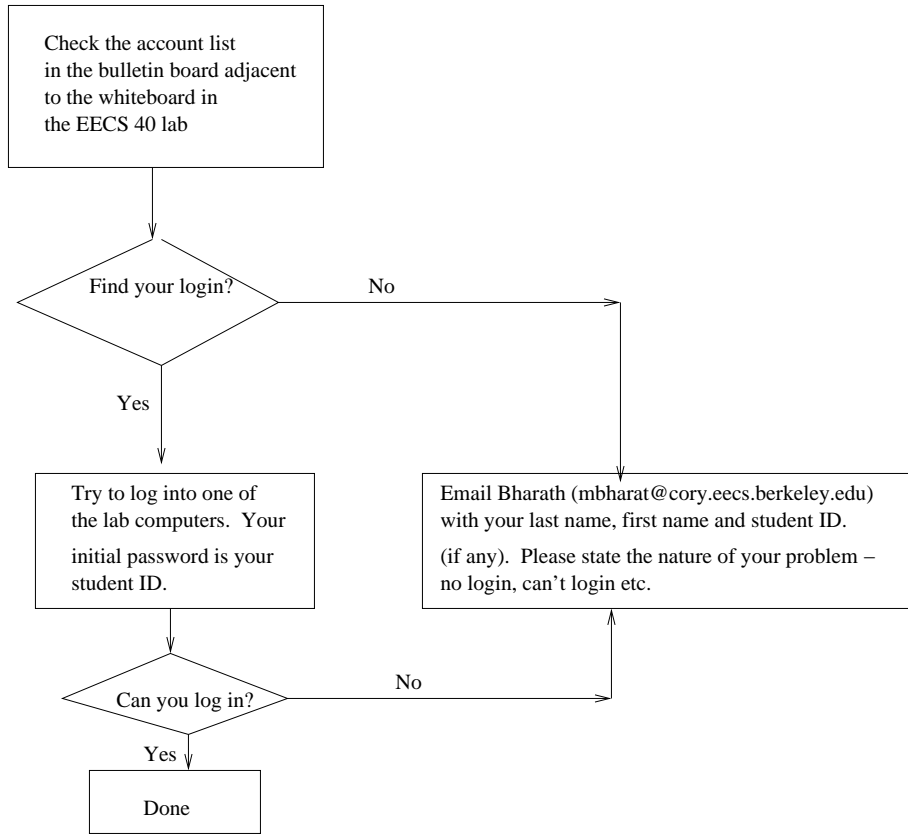


Figure 1. Windows account setup instructions flowchart

If you have after hour access to Cory hall, you can use the windows computers in 199 Cory hall to access your ee40 account. **You don't have access to any other computers, except the ones in 199 Cory and 140 Cory (the EECS 40 lab).**

3. Setting up your UNIX account

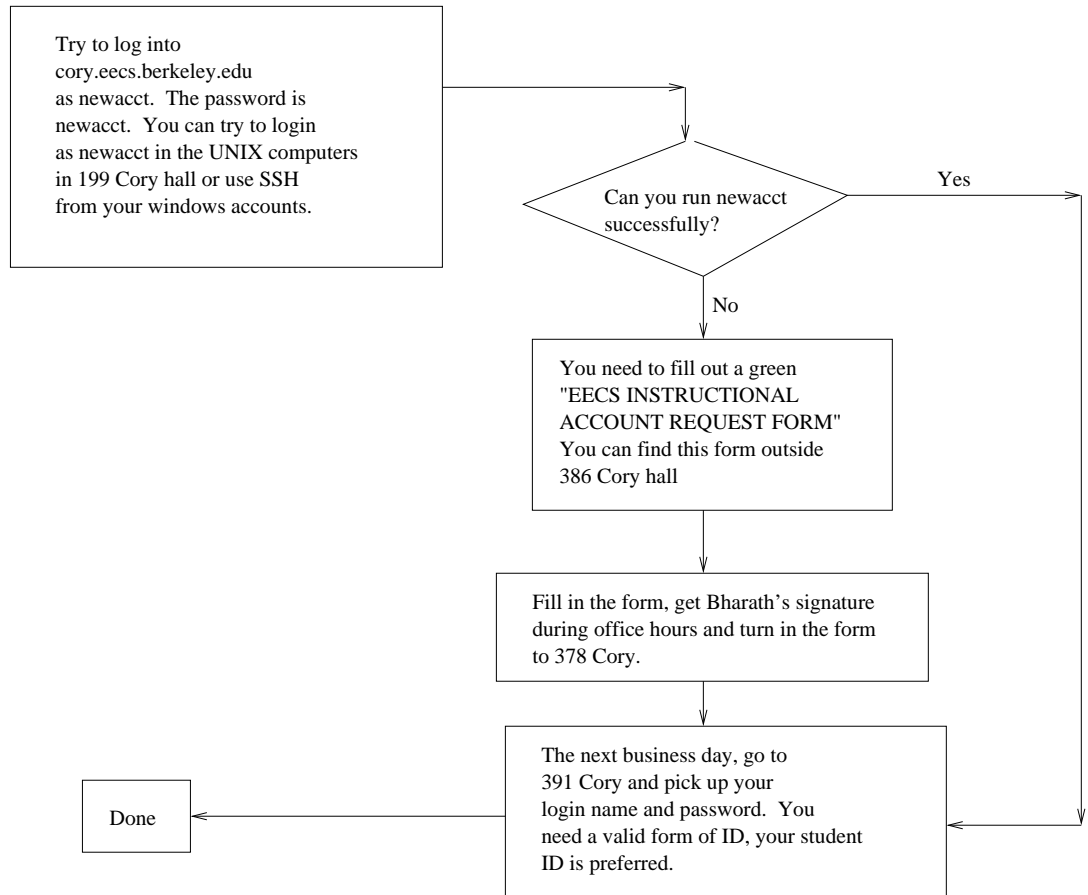


Figure 2. UNIX account setup instructions flowchart

If you have after hour access to Cory hall, you can use the UNIX machines in 199 Cory. If not, you can log into cory.eecs.berkeley.edu from a machine on or off campus with a SSH program.

4. Conclusion

This document has shown you how to get a cardkey and set up both Windows and UNIX accounts. If you have questions, corrections, suggestions for improving this document, please email: mbharat@cory.eecs.berkeley.edu