

## Registering the LS-2000 with Windows Me

Before beginning device registration, confirm that:

- you have installed Nikon Scan 3 as instructed in the [Nikon Scan Reference Manual](#)
- the Nikon Scan 3 CD is inserted in the CD-ROM drive

14-1 The first time the scanner is connected, Windows will display a message stating that new hardware has been detected.

14-2 After a short pause, a dialog will be displayed asking whether you want to search for a driver automatically or specify a location. If the Nikon Scan 3 CD is not in the CD-ROM drive, insert the disk *while holding down the shift* key to prevent the Nikon Scan installer from starting automatically.

14-3 Select **Automatic search for a better driver** and click **Next**.

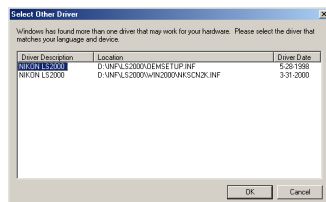
Click [here](#)  to proceed to the next step.



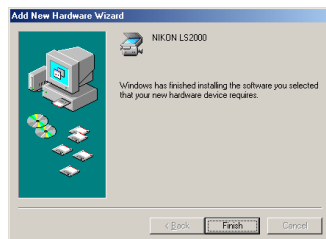
When you insert the Nikon Scan 3 CD into the CD-ROM drive, the installer Welcome program may start automatically. Click **Exit** to exit the Welcome program.



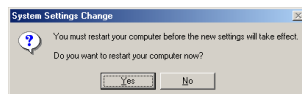
14-4 You will be prompted to choose one of the drivers shown at right. Select the driver with the path “\INF\LS2000\OEMSETUP.INF” and click **OK**.



14-5 The dialog shown at right will be displayed. Click **Finish**.



14-6 The dialog shown at right may be displayed; click **Yes** to restart your computer.



## Step 15—Confirm device registration

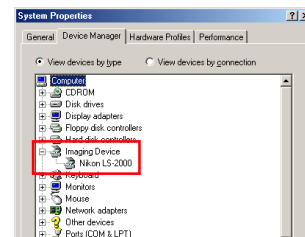
After completing device registration, check that the Windows device drivers are installed and functioning normally.

15-1 Make sure that your scanner is connected to your computer and turned on.

15-2 From the **Start** menu, select **Settings > Control Panel**. Double-click the **System** icon in the window that appears.


15-3 The System Properties dialog will be displayed. Click the Device Manager tab.

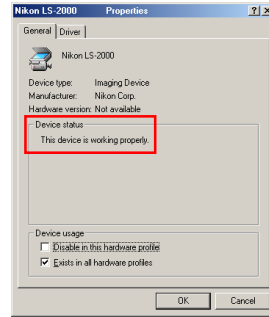
15-4 Your Nikon Scanner should be listed as an imaging device. If an “Imaging Device” item appears, click the “+” mark next to the item to view a list of imaging devices.



Click [here](#)  to proceed to the next step.

15-5 Double-click the listing for your scanner. If your scanner is not listed as an imaging device, proceed to “Updating the Device Driver” (opposite).

15-6 The properties window for your scanner will be displayed. If “This device is working properly” appears under “Device status” in the General tab, the device driver for your scanner is installed and functioning normally. Click [here](#)  to return to the *Nikon Scan Reference Manual*. If a message such as, “The drivers for this device are not installed” appears, proceed to “Updating the Device Driver” (opposite).

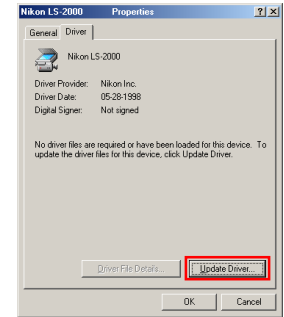


## Updating the Device Driver

A-1 Open the Device Manager as instructed in [steps 15-1 to 15-3](#).

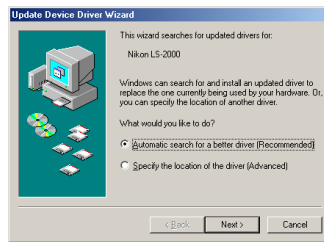
A-2 If your scanner is listed under “Unknown devices” or “Other devices,” or appears next to a “?” “!” or “x,” double-click the scanner icon to open the properties window for the device.

A-3 Open the Driver tab and click **Update Driver....**



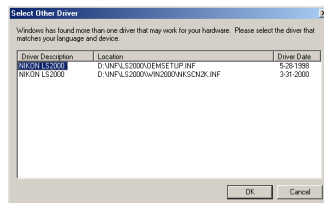
Click [here](#)  to proceed to the next step.

A-4 The Update Device Driver Wizard dialog will appear. With the shift key held down to prevent the installer from starting automatically, insert the Nikon Scan 3 CD into a CD-ROM drive.



A-5 Select **Automatic search for a better driver** and click **Next**.

A-6 You will be prompted to choose one of the drivers shown at right. Select the driver with the path “\INF\LS2000\OEMSETUP.INF” and click **OK**.



A-7 The Update Device Driver Wizard will announce that it has found the drivers for your scanner; click **Finish** to exit the wizard. If you are prompted to restart your computer, click **Yes** to restart Windows.

Click [here](#)  to return to the Nikon Scan Reference Manual.



When you insert the Nikon Scan 3 CD into the CD-ROM drive, the installer Welcome program may start automatically. Click **Exit** to exit the Welcome program.

