

CS152 Remote Desktop Client
University of California at Berkeley
College of Engineering
Department of Electrical Engineering and Computer Sciences

Compiled: 9/20/2004 for CS152 Fall 04, Dave Patterson and John Lazzaro

Last Updated: 5/23/2005 12:04 AM

Please send any errors, corrections, or comments to cs152-staff@imail.eecs.berkeley.edu

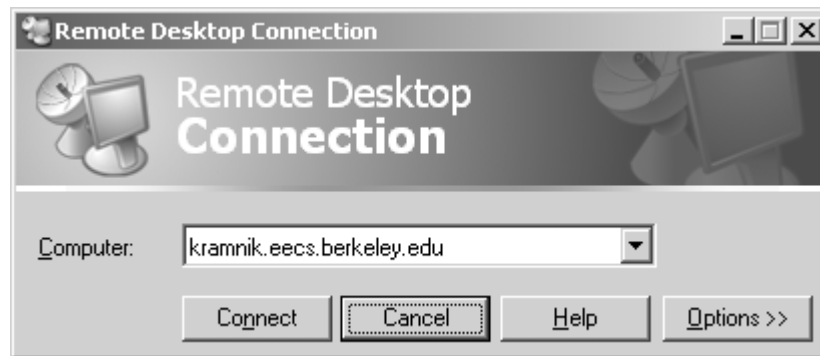
1 SOFTWARE NEEDED.....	1
2 RDC SERVER.....	1
3 KNOWN PROBLEMS AND THEIR WORKAROUNDS.....	2
3.1 UNABLE TO RUN REMOTE DESKTOP CLIENT IN 119 CORY VIA MENU SHORTCUT	2
3.2 UNABLE TO CREATE A NEW PROJECT NAVIGATOR PROJECT	2
3.3 MODEL SIM COMPLAINS ABOUT NOT BEING ABLE TO FIND MODULES/ACCESS LIBRARIES	2
4 ADDITIONAL INFORMATION.....	3

1 Software Needed

In order to remotely access the CAD tools used for this course, a client for Windows Terminal Services is needed:

- Windows Remote Desktop
<http://www.microsoft.com/windowsxp/downloads/tools/rdclientdl.msp>
- Remote Desktop Client for OS X (untested)
<http://www.microsoft.com/mac/otherproducts/otherproducts.aspx?pid=remotedesktopclient>
- rdesktop (untested)
<http://www.rdesktop.org>

2 RDC Server



The server used for cs152 is kramnik.eecs.berkeley.edu, which runs Windows Server 2003. However, the software environment on kramnik and in 119 are different so there are some issues. In addition, because Xilinx does not officially support running its tools under Windows Sever 2003, some significant bugs may be encountered.

3 Known Problems and their Workarounds

3.1 Unable to run Remote Desktop Client in 119 Cory via Menu Shortcut

If the menu shortcut doesn't work, Microsoft Terminal Services Client can be run manually by start>run and entering mstsc or manually executing C:\WINNT\system32\mstsc.exe.

3.2 Unable to create a new Project Navigator Project



It appears that Project Navigator is unable to create new projects under Windows Sever 2003. However, it is able to open and modify previous created ones. A blank project is located in M:\skeleton. Copy M:\skeleton to the desired directory to create a new project.

3.3 ModelSim complains about not being able to find modules/access libraries

```
# ** Error: (vsim-19) Failed to access library 'xilinxcorelib_ver' at "xilinxcorelib_ver".
# No such file or directory. (errno = ENOENT)
# ** Error: (vsim-19) Failed to access library 'unisims_ver' at "unisims_ver".
# No such file or directory. (errno = ENOENT)
# ** Error: (vsim-3033) bitladder.vf(17): Instantiation of 'XOR3' failed. The design unit was not
found.
#       Region: /bit2adder_tb/myAdder/ba
#       Searched libraries:
# ** Error: (vsim-19) Failed to access library 'xilinxcorelib_ver' at "xilinxcorelib_ver".
# No such file or directory. (errno = ENOENT)
# ** Error: (vsim-19) Failed to access library 'unisims_ver' at "unisims_ver".
# No such file or directory. (errno = ENOENT)
#
#       work
```

In 119 Cory, we have modified the default modelsim.ini file (in c:\ModelSim_6.0b), to include information about the location of Xilinx simulation libraries. That way, when starting a simulation with “vsim -t 1ps +maxdelays -L xilinxcorelib_ver -L unisims_ver bit2adder_tb glbl,” ModelSim is able to locate the xilinxcorelib_ver and unisims_ver libraries. Copy M:\lib\modelsim.ini into your project directory so that Modelsim knows the correct location of the libraries.

Also, this error may occur because the version of Modelsim installed on Kramnik is setup differently than the one installed in 119. You may need to modify the modelsim.ini in your project directory. If you open the file, you will see the lines that are responsible for mapping unisims_ver and XilinxCoreLib_ver to the correct location; comment and uncomment the section as needed.

```
;Kramnik Libraries
unisims_ver = C:\Modeltech_6.0b\unisims_ver
XilinxCoreLib_ver = C:\Modeltech_6.0b\XilinxCoreLib_ver
simprims_ver = C:\Modeltech_6.0b\simprims_ver
UNISIM=C:\Modeltech_6.0b\unisim
SIMPRIM=C:\Modeltech_6.0b\simprim
XILINXCORELIB=C:\Modeltech_6.0b\XilinxCoreLib

;119 Cory Libraries
UNISIMS_VER =C:\Modeltech_6.0b\modelsim_lib\unisims_ver
SIMPRIMS_VER =C:\Modeltech_6.0b\modelsim_lib\simprims_ver
XILINXCORELIB_VER =C:\Modeltech_6.0b\modelsim_lib\XilinxCoreLib_ver
UNISIM=C:\Modeltech_6.0b\modelsim_lib\unisim
SIMPRIM=C:\Modeltech_6.0b\modelsim_lib\simprim
XILINXCORELIB=C:\Modeltech_6.0b\modelsim_lib\XilinxCoreLib
```

4 Additional Information

See the cs150 Kramnik information page: <http://www-inst.eecs.berkeley.edu/~cs150/fa04/Kramnik.htm>