

CONNECTING FROM HOME

Computer Science 61BL, Summer 2009
Department of Electrical Engineering and Computer Sciences
University of California, Berkeley

COLLEEN LEWIS, KAUSHIK IYER, JONATHAN KOTKER, GEORGE WANG, DAVID ZENG
Edited from the notes of MIN XU

1 CONNECTING FROM HOME¹

Working from home or from your laptop can be very helpful in CS61BL. You can already work on UC – WISE course content from home through any web browser, however after installing and configuring the following programs, you can also submit homework and projects, continue working on code from lab and transfer files between your instructional account and your home computer.

1.1 SETTING UP PuTTY

PuTTY is used to ssh into your instructional account (effectively get access to a shell) and enables you to execute commands and access files just like you would from your workstation in lab.

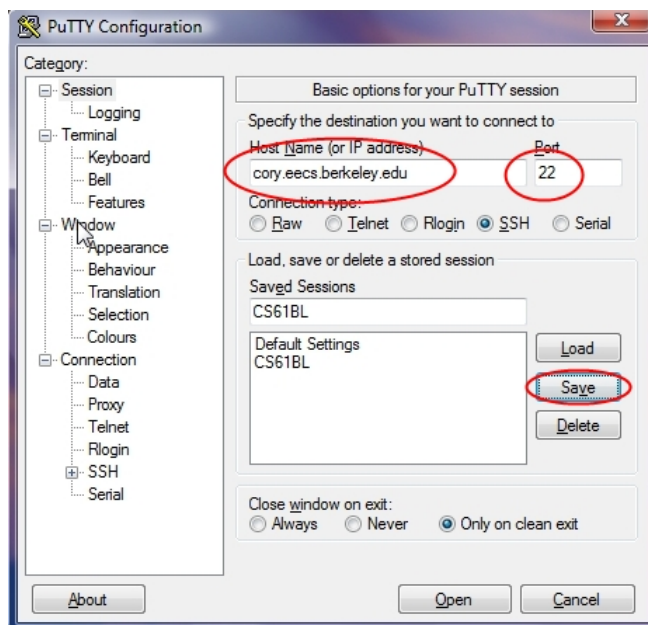


Figure 1: Setting for PuTTY

1. Download PuTTY from <http://www.chiark.greenend.org.uk/~sgtatham/putty/download.html>. Just get `putty.exe`.
2. Open `putty.exe`, no installation is needed.
Set Host Name to `cory.eecs.berkeley.edu`

¹This section draws heavily upon Min Xu's guide for CS61A found at <http://inst.eecs.berkeley.edu/~cs61a/su09/fromhome.pdf>.

Set Port to 22

Set Connection type to SSH

You can also give save your settings under a name given in Saved Session blank. Once you hit Save, you can directly access your settings next time you open PuTTY.

This is all you need if you are OK with just *text-only* interface. You will notice that if you open `emacs`, you will get a text-based interface. To enable graphical interfaces, be sure to read section 1.3

1.2 SETTING UP WINSCP

WinSCP will allow you to transfer files from your home computer to your instructional account and vice versa.

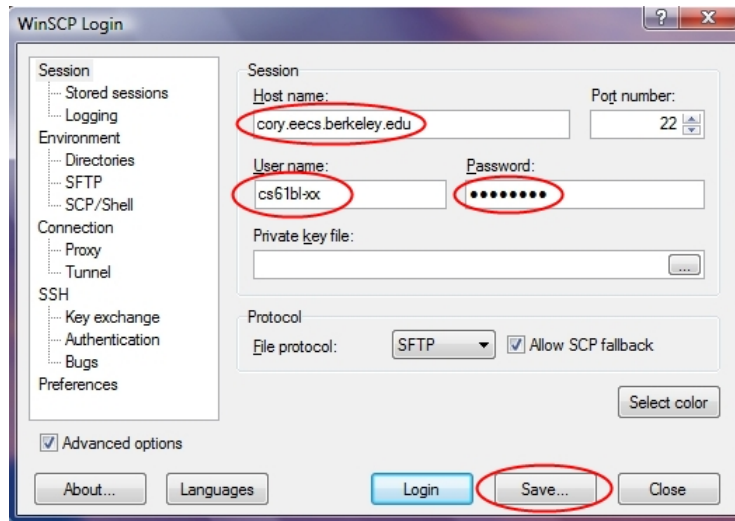


Figure 2: Setting for WinSCP

1. Download WinSCP from <http://winscp.net/eng/download.php>.
2. Install, nothing tricky here, just go with the default settings for everything.
3. Open WinSCP
 - Set Host Name to `cory.eecs.berkeley.edu`
 - Set Port to 22
 - Enter Instruction Account Username and Password
 - You can again save session as before.
4. The rest should be intuitive, just move files around as you would in windows.

1.3 SETTING UP XMING

XMing is a program that interfaces with PuTTY to enable you to view graphical interface programs when you connect remotely to your instructional accounts. In particular, using this will enable you to access `Eclipse` and `emacs` through a remote connection. The course staff would however recommend that you download a copy of `Eclipse` from <http://www.eclipse.org/downloads/download.php?file=/eclipse/downloads/drops/R-3.4.2-200902111700/eclipse-SDK-3.4.2-win32.zip> for use on any personal computers.

1. Download XMing from http://sourceforge.net/project/showfiles.php?group_id=156984
 - Download *both* Xming and Xming – fonts
2. Install both, just go with the default settings again.

3. Open Xlaunch

I like the Multiple Window mode, go with whatever style your heart desires

Select **Start no client**

You don't need to change anything on the next two pages.

4. *Tricky step here*, open PuTTY

On the left settings bar, Look under **Connection**

open up more setting options for **SSH**

Go to **X11**, Check **Enable X11 Forwarding**

Enter **localhost : 0** for **X display location**

Enter **Host Name** information as per the PuTTY Guide, and connect.

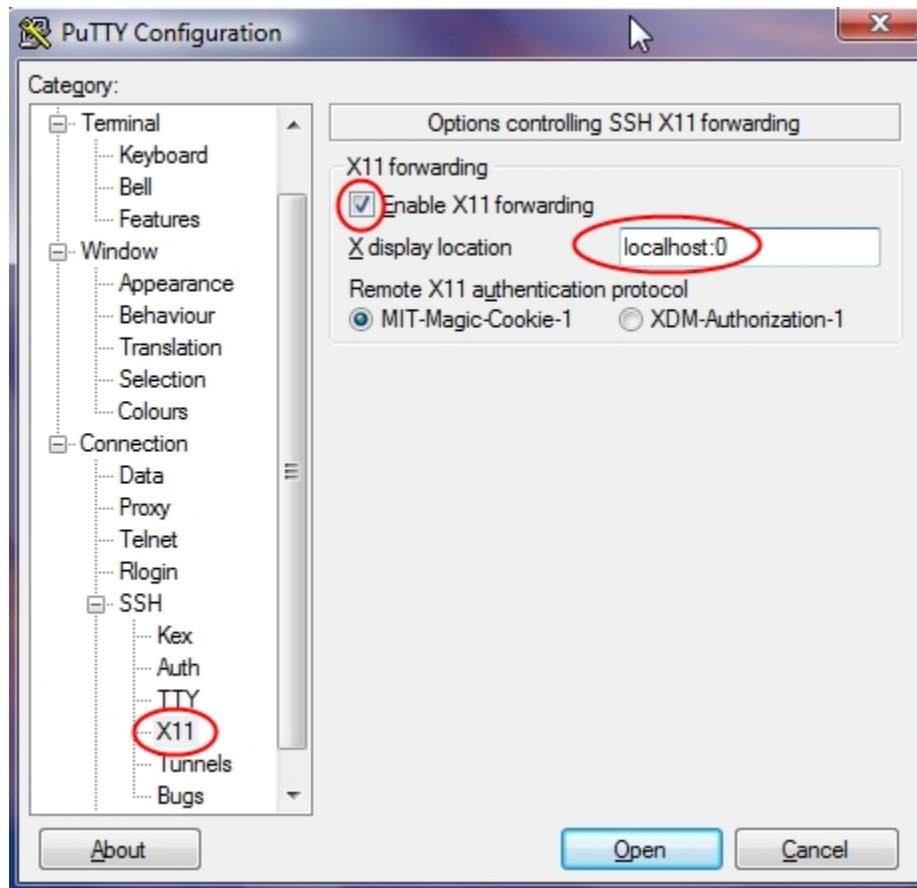


Figure 3: Setting for X11 Forwarding

5. Log in, now try commands like `emacs`.