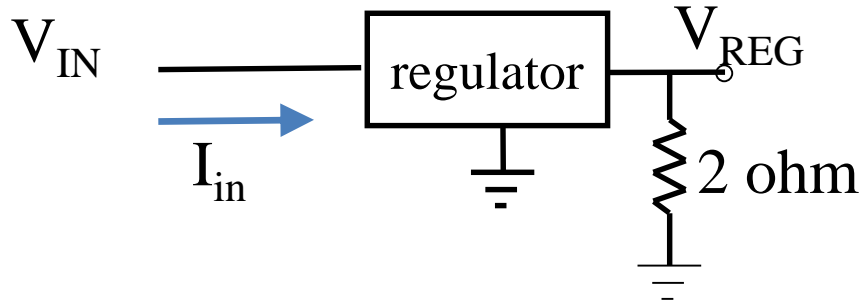
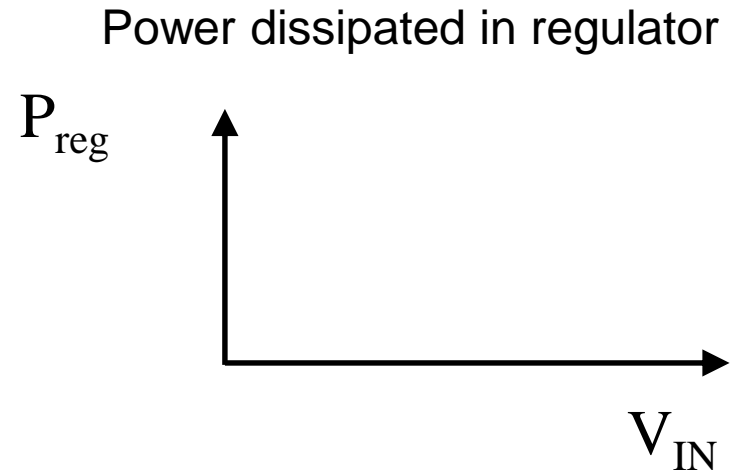
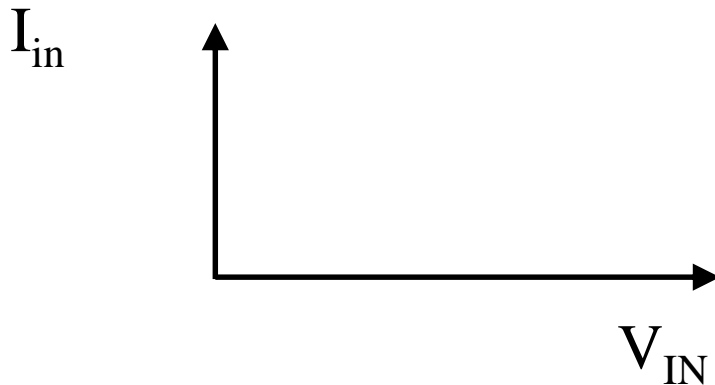
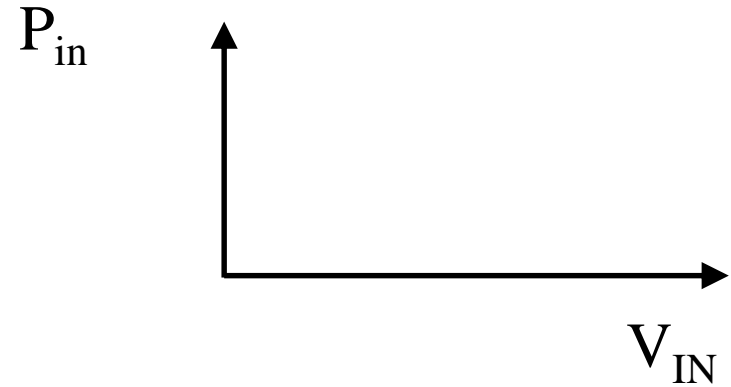
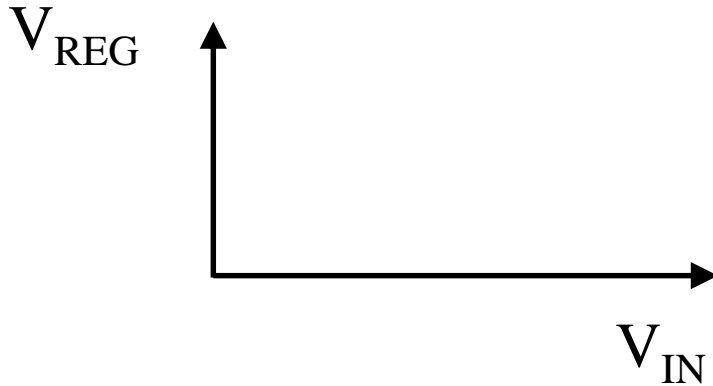


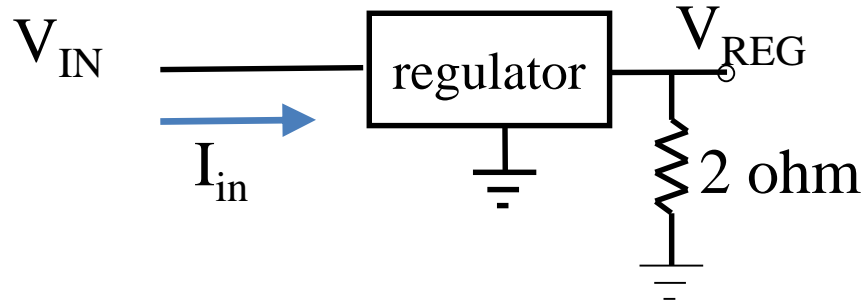
# Approximate voltage regulator behavior



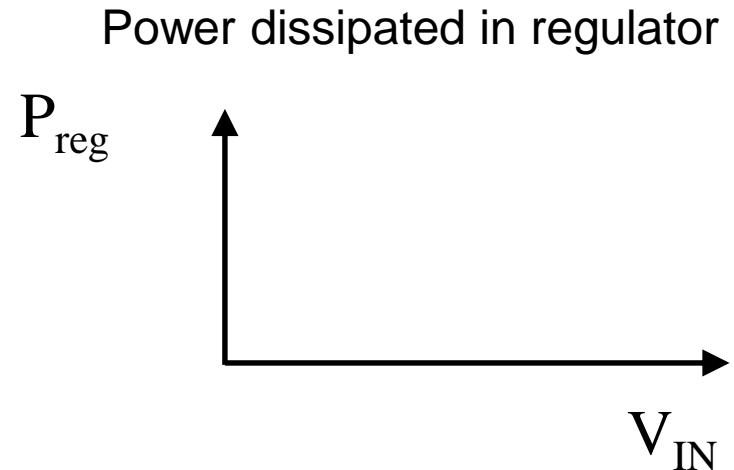
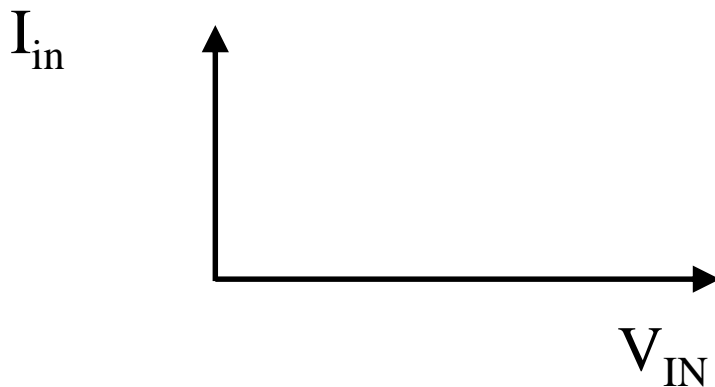
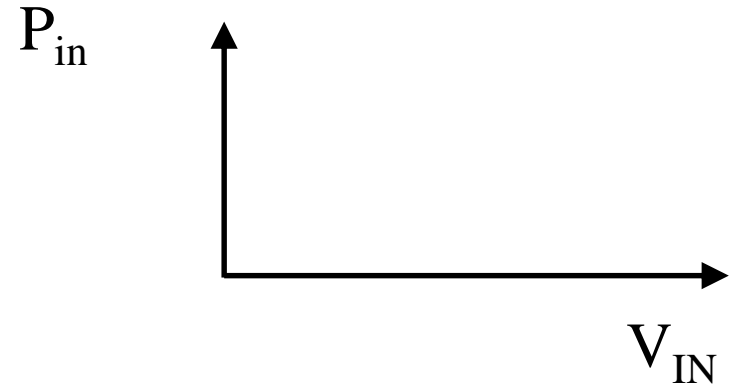
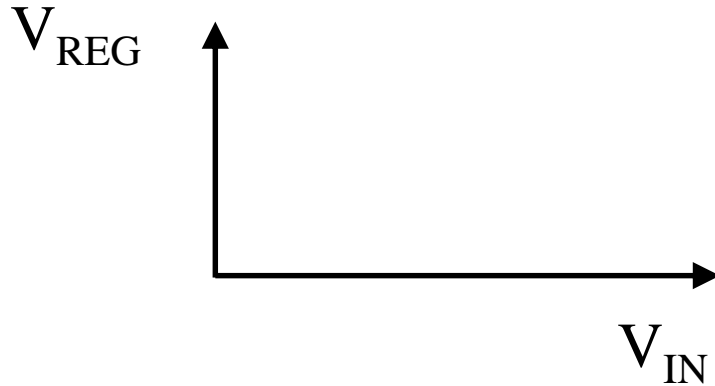
Linear Regulator  
nominal output 5V,



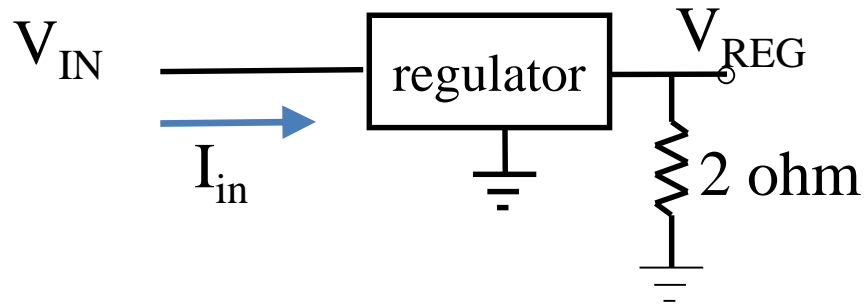
# Approximate voltage regulator behavior



Boost Converter, nominal  
Output 5V,  $V_{IN} < V_{REG}$



# Approximate voltage regulator behavior



Buck Converter, nominal  
Output 5V,  $V_{IN} > V_{REG}$

