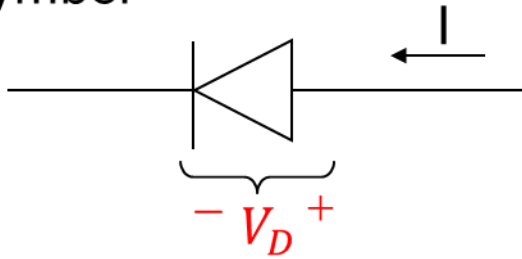
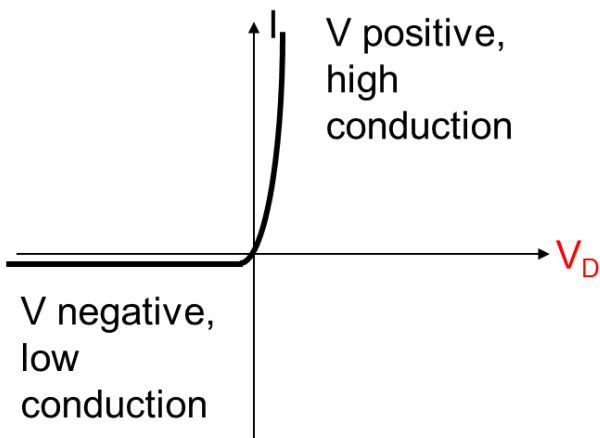


Diode Handout:

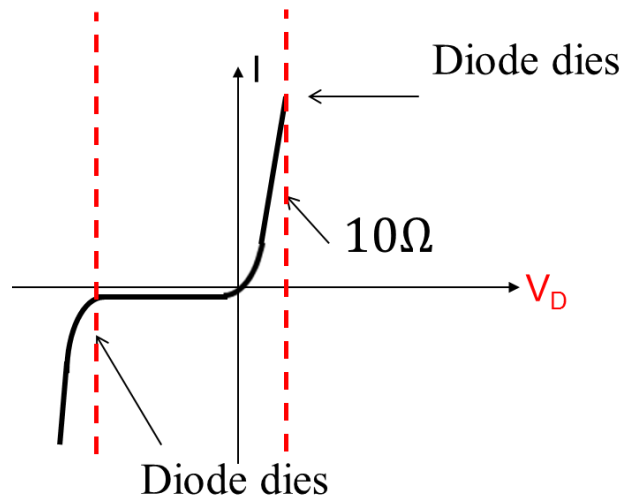
Symbol



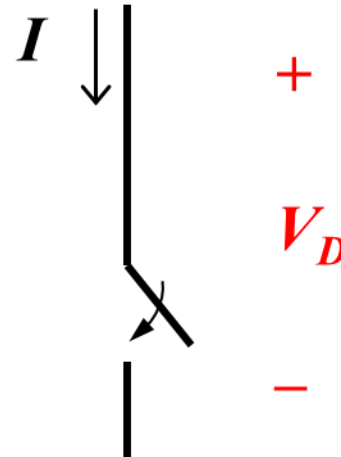
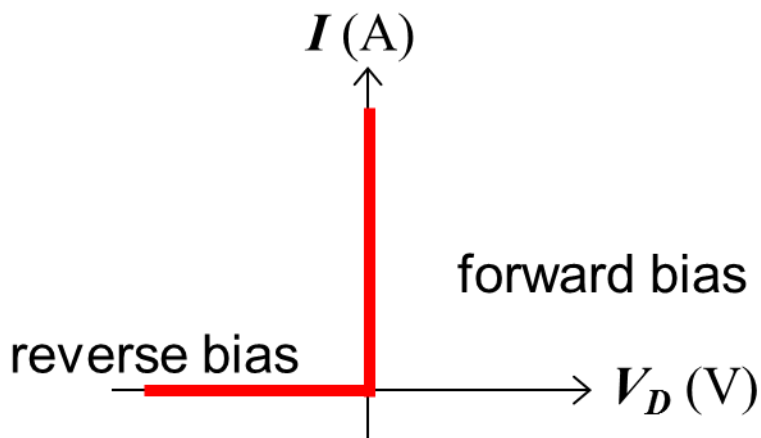
Zoomed In I-V Characteristic of diode:



Zoomed Out I-V Characteristic of Diode



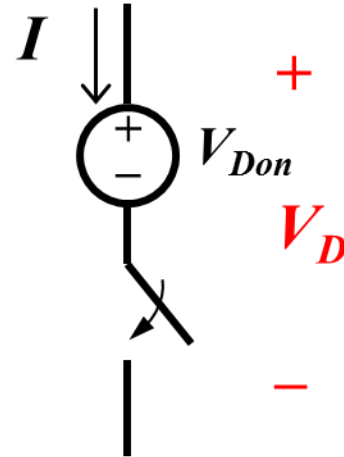
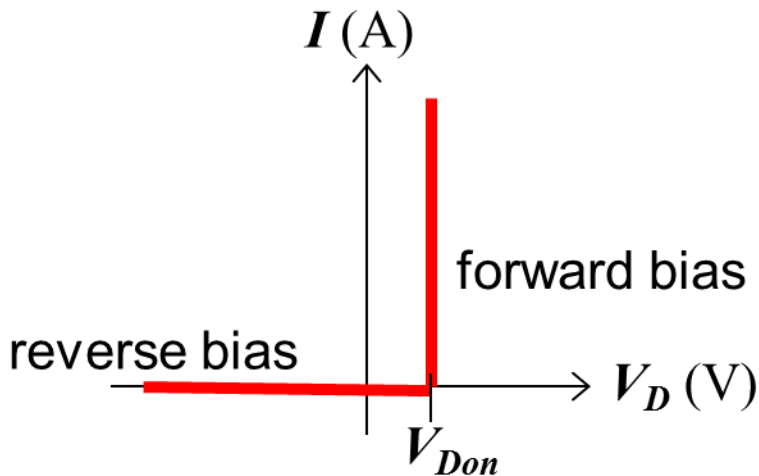
Ideal Diode a.k.a. Switch Model:



ON: When $I_D > 0$, $V_D = 0$

OFF: When $V_D < V_{Don}$, $I_D = 0$

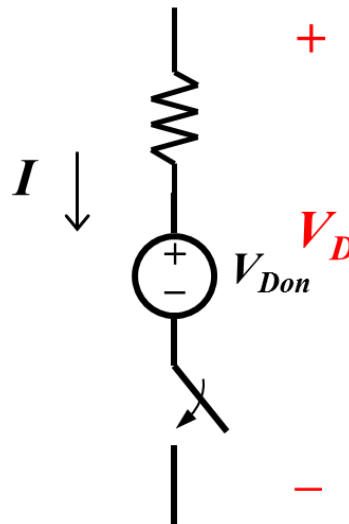
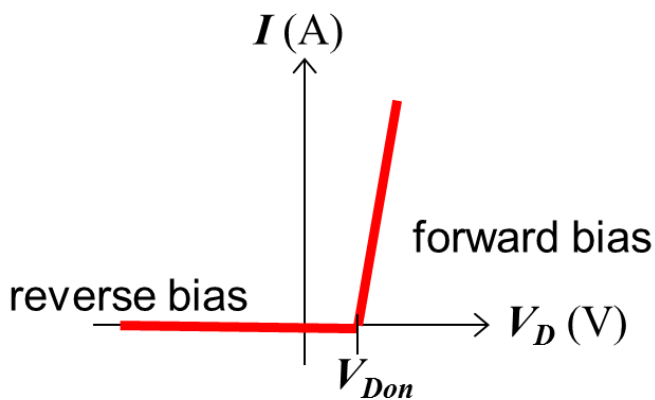
Voltage Source Diode Model:



ON: When $I_D > 0$, $V_D = V_{Don}$

OFF: When $V_D < V_{Don}$, $I_D = 0$

Piecewise Linear Diode Model:



ON: When $V_D \geq V_{Don}$, then $I_D = (V_D - V_{Don})/R_{on}$

OFF: When $V_D < V_{Don}$, $I_D = 0$