

EECS 43
Prelab
Op Amps (I)

Name: _____

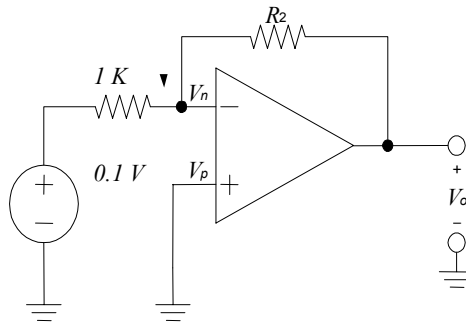
TA: _____

Section: _____

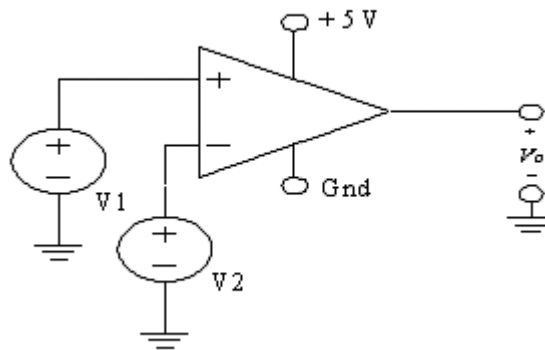
1. Draw a non-inverting amplifier configuration, clearly numbering and marking all 5 pins of the op-amp chip which are used.
2. In the configuration drawn above (assuming an ideal op-amp model), what are the current values going into Pins 2 and 3? What is the voltage difference between Pins 2 and 3?

2. In the configuration drawn above (assuming an ideal op-amp model), what are the current values going into Pins 2 and 3? What is the voltage difference between Pins 2 and 3?

3. In order to achieve a gain of -50 in the following circuit, what value of R_2 should be used? What is the output voltage for this circuit? **[10+5 pts]**



4. Consider the comparator as shown below. Find out the V_{out} for the following conditions.



V1	(V2 = 1V) Vo	(V2 = 3V) Vo
-1		
0		
1		
2		
3		
4		
5		