

CS61A SPRING 2009 — QUICK GUIDE TO CONNECTING FROM HOME (WITH WINDOWS)

MIN XU

1. SETTING UP PuTTY

PuTTY is the basic remote connection client program. You should have this unless you know how to use other remote connection programs.

- (1) Download PuTTY from <http://www.chiark.greenend.org.uk/~sgtatham/putty/>

Just get `putty.exe`

- (2) Open `PuTTY.exe`, no installation is needed.

Set Host Name to `star.cs.berkeley.edu`

Set Port to 22

Set Connection type to SSH

You can also give save your settings under a name given in Saved Session blank. Once you hit `Save`, you can directly access your settings next time you open PuTTY.

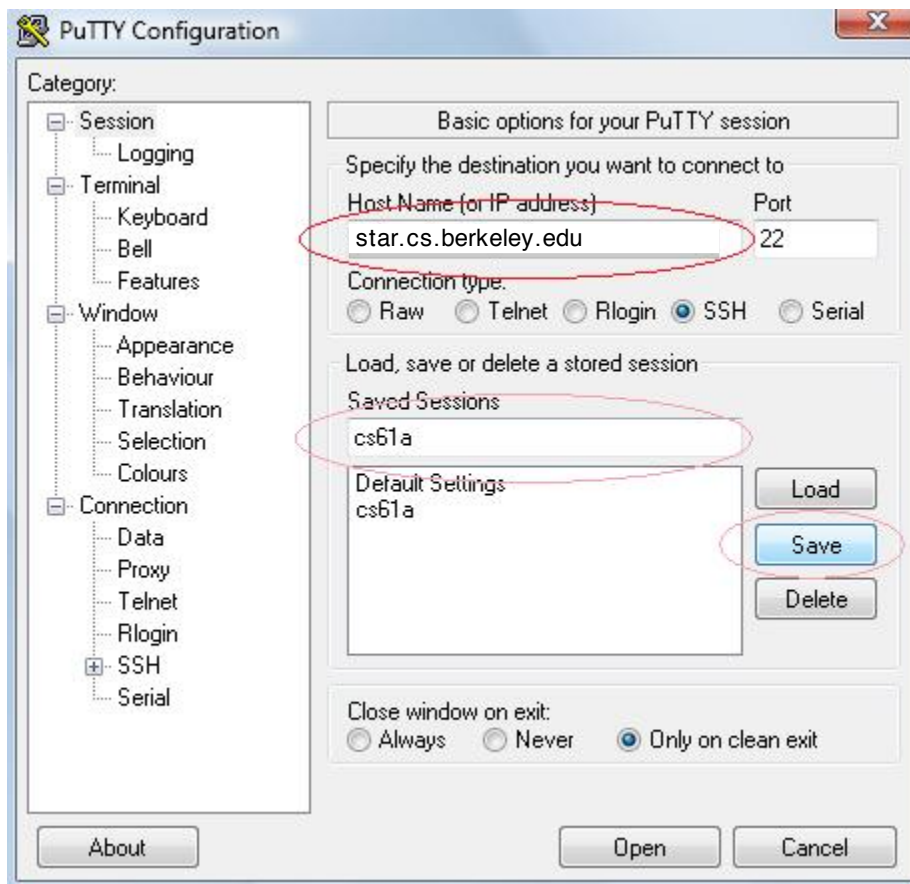


FIGURE 1. Setting for PuTTY

This is all you need if you are OK with just *text-only* interface. You will notice that if you open `emacs`, you will get a text-based interface. To enable graphical interface, be sure to read section 3.

2. SETTING UP WINSCP

WinSCP will allow you to transfer files from your home computer to your instructional account.

- (1) Download WinSCP from <http://winscp.net/eng/download.php>
- (2) Install, nothing tricky here, just go with the default settings for everything.
- (3) Open WinSCP
 - Set Host Name to **star.cs.berkeley.edu**
 - Set Port to 22
 - Enter Username and Password
 - You can again save session as before.
- (4) The rest should be intuitive, just move files around as you would in windows.

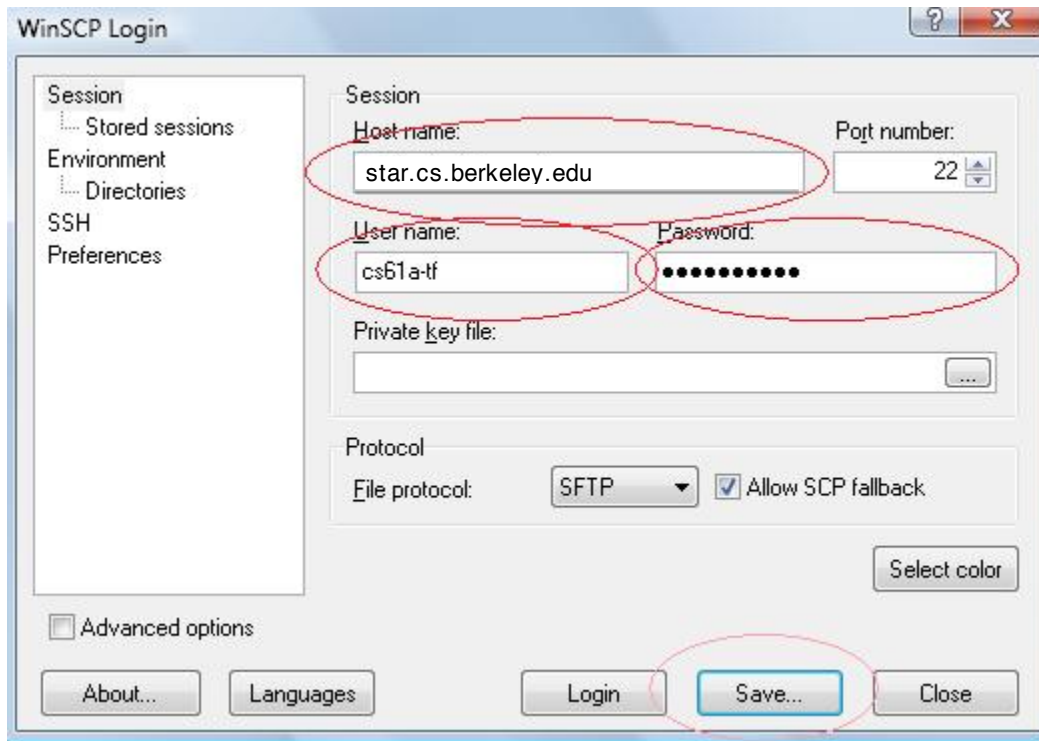


FIGURE 2. Setting for WinSCP

3. SETTING UP XMING

XMing will give you graphical support for your remote connection.

- (1) Download XMing from http://sourceforge.net/project/showfiles.php?group_id=156984
 - Download *both* Xming and Xming-fonts
- (2) Install both, just go with the default settings again.
- (3) Open Xlaunch
 - I like the Multiple Window mode, go with whatever style your heart desires
 - Select **Start no client**
 - You don't need to change anything on the next two pages.
- (4) *Tricky step here*, open PuTTY
 - On the left settings bar, Look under **Connection**
 - open up more setting options for SSH
 - Go to X11, Check **Enable X11 Forwarding**
 - Enter `localhost:0` for X display location
 - Enter Host Name information as per the PuTTY Guide, and connect.
- (5) Log in, now try commands like `emacs`

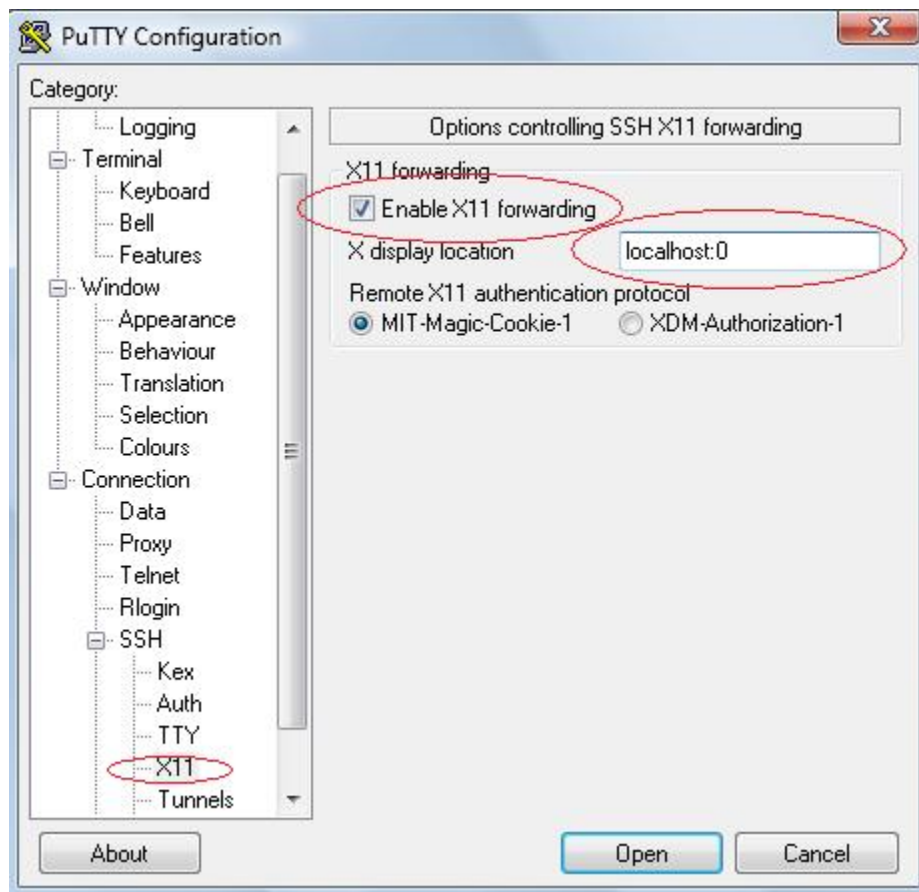


FIGURE 3. Setting for X11 Forwarding