

Figure 3.4 The black box equivalent of the circuit shown in Fig. 3.2.

From: Nilsson/Riedel, Electric Circuits, 6e, July 2000 Prentice Hall, Inc.

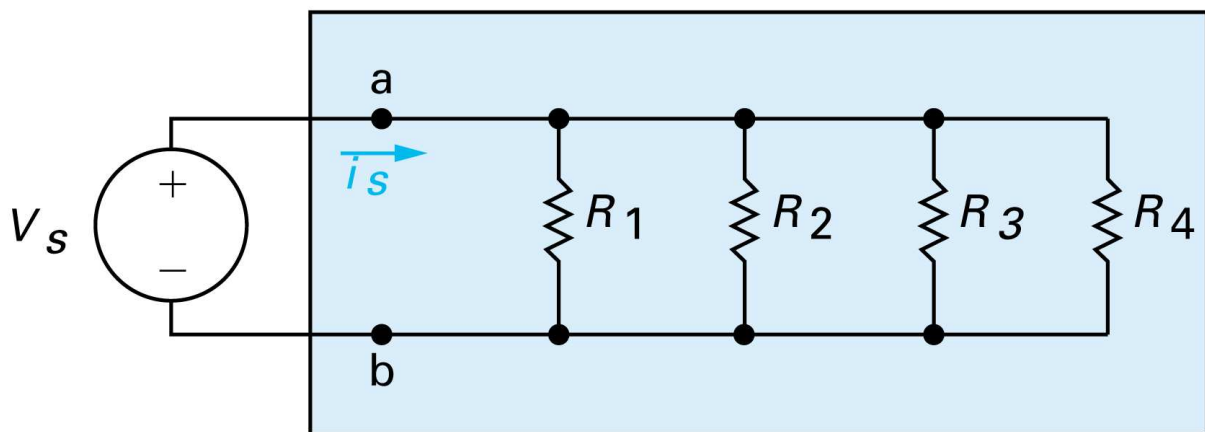


Figure 3.5 Resistors in parallel.

From: Nilsson/Riedel, Electric Circuits, 6e, July 2000 Prentice Hall, Inc.

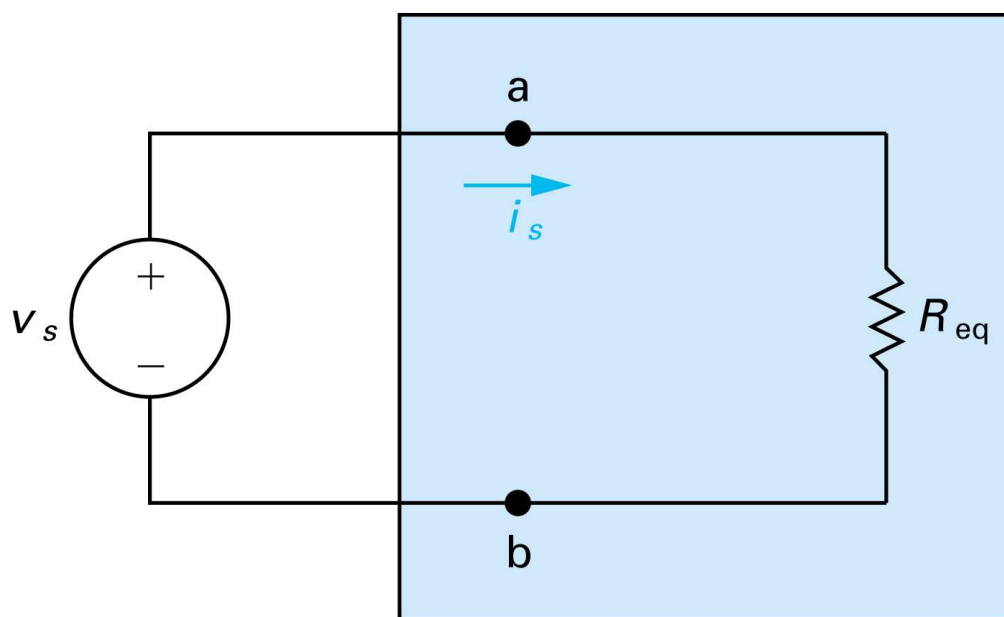


Figure 3.7 Replacing the four parallel resistors shown in Fig. 3.5 with a single equivalent resistor

From: Nilsson/Riedel, Electric Circuits, 6e, July 2000 Prentice Hall, Inc.

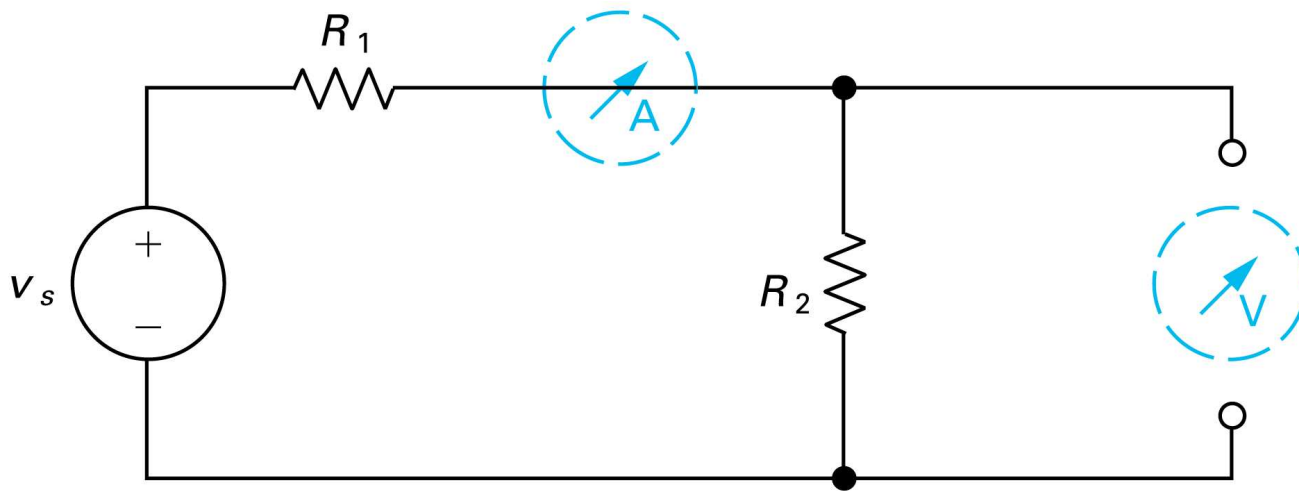


Figure 3.19 A short-circuit model for the ideal ammeter, and an open-circuit model for the ideal voltmeter.

From: Nilsson/Riedel, Electric Circuits, 6e, July 2000 Prentice Hall, Inc.

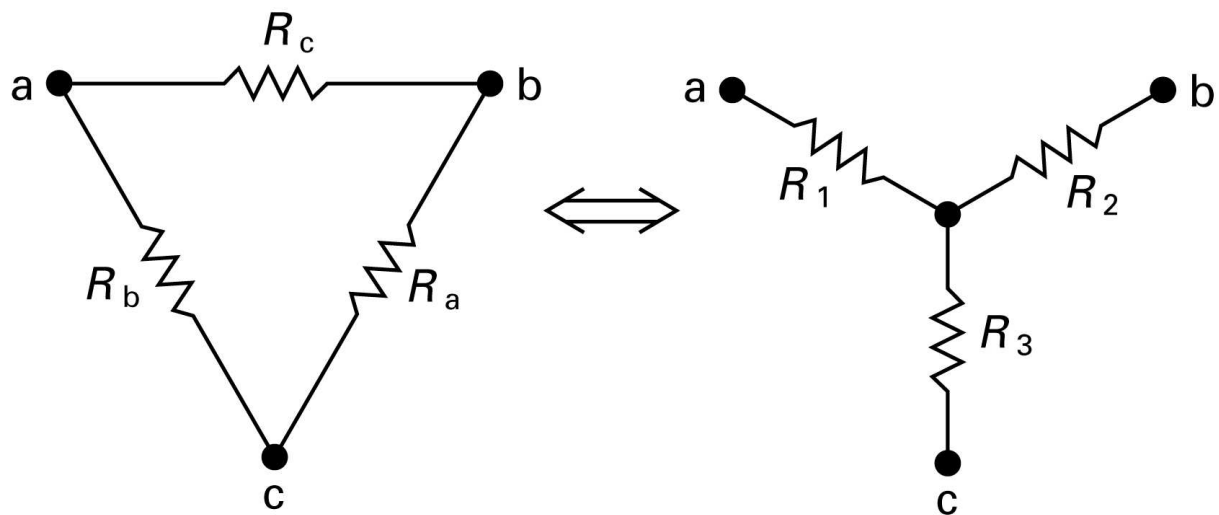


Figure 3.28 The Δ -to-Y transformation.

From: Nilsson/Riedel, Electric Circuits, 6e, July 2000 Prentice Hall, Inc.