

Lecture 5

OUTLINE

- Bipolar Junction Transistor (BJT) (Cont'd)
 - BJT operation in saturation mode
 - PNP BJT
 - Examples of small signal models

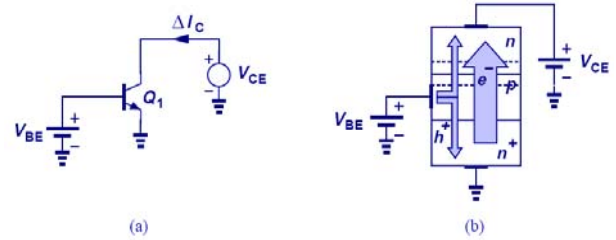
Reading: Chapter 4.5-4.6

EE105 Spring 2008

Lecture 4, Slide 1

Prof. Wu, UC Berkeley

Bipolar Transistor in Saturation



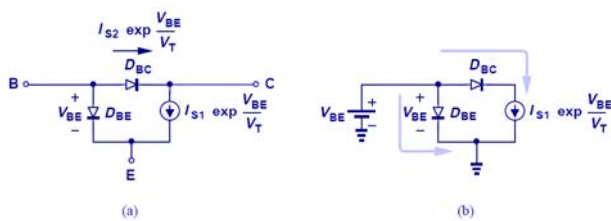
- When collector voltage drops below base voltage and forward biases the collector-base junction, base current increases and the current gain factor, β , decreases.

EE105 Spring 2008

Lecture 4, Slide 2

Prof. Wu, UC Berkeley

Large-Signal Model for Saturation Region

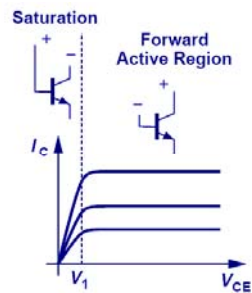


EE105 Spring 2008

Lecture 4, Slide 3

Prof. Wu, UC Berkeley

Overall I/V Characteristics



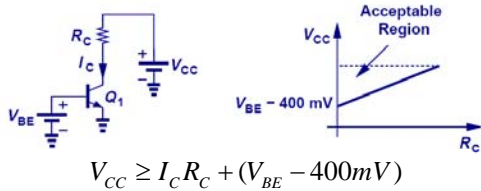
- The speed of the BJT also drops in saturation.

EE105 Spring 2008

Lecture 4, Slide 4

Prof. Wu, UC Berkeley

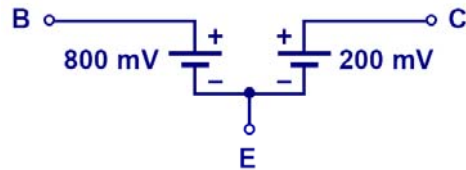
Example: Acceptable VCC Region



- In order to keep BJT at least in soft saturation region, the collector voltage must not fall below the base voltage by more than 400mV.
- A linear relationship can be derived for V_{CC} and R_C and an acceptable region can be chosen.

EE105 Spring 2008 Lecture 4, Slide 5 Prof. Wu, UC Berkeley

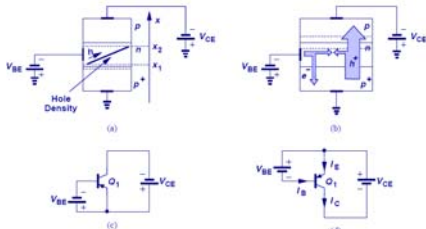
Deep Saturation



- In deep saturation region, the transistor loses its voltage-controlled current capability and V_{CE} becomes constant.

EE105 Spring 2008 Lecture 4, Slide 6 Prof. Wu, UC Berkeley

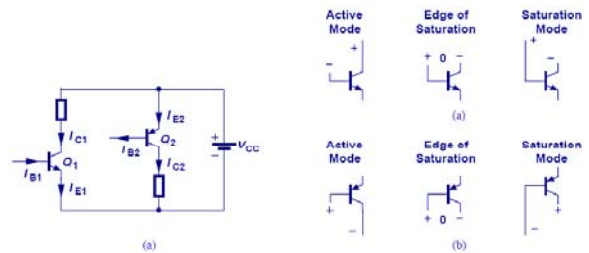
PNP Transistor



- With the polarities of emitter, collector, and base reversed, a PNP transistor is formed.
- All the principles that applied to NPN's also apply to PNP's, with the exception that emitter is at a higher potential than base and base at a higher potential than collector.

EE105 Spring 2008 Lecture 4, Slide 7 Prof. Wu, UC Berkeley

A Comparison between NPN and PNP Transistors



- The figure above summarizes the direction of current flow and operation regions for both the NPN and PNP BJT's.

EE105 Spring 2008 Lecture 4, Slide 8 Prof. Wu, UC Berkeley

PNP Equations with Early Effect

$$I_C = I_S \exp \frac{V_{EB}}{V_T}$$

$$I_B = \frac{I_S}{\beta} \exp \frac{V_{EB}}{V_T}$$

$$I_E = \frac{\beta+1}{\beta} I_S \exp \frac{V_{EB}}{V_T}$$

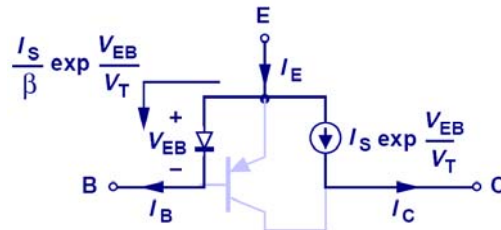
$$I_C = \left(I_S \exp \frac{V_{EB}}{V_T} \right) \left(1 + \frac{V_{EC}}{V_A} \right)$$

EE105 Spring 2008

Lecture 4, Slide 9

Prof. Wu, UC Berkeley

Large Signal Model for PNP

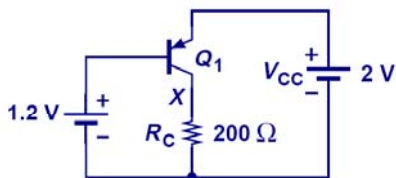


EE105 Spring 2008

Lecture 4, Slide 10

Prof. Wu, UC Berkeley

PNP Biasing



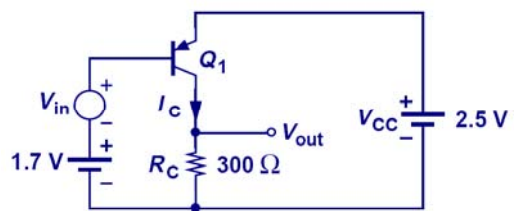
- Note that the emitter is at a higher potential than both the base and collector.

EE105 Spring 2008

Lecture 4, Slide 11

Prof. Wu, UC Berkeley

Small Signal Analysis

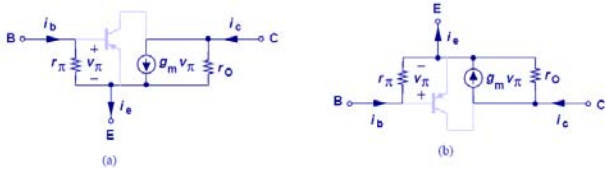


EE105 Spring 2008

Lecture 4, Slide 12

Prof. Wu, UC Berkeley

Small-Signal Model for PNP Transistor



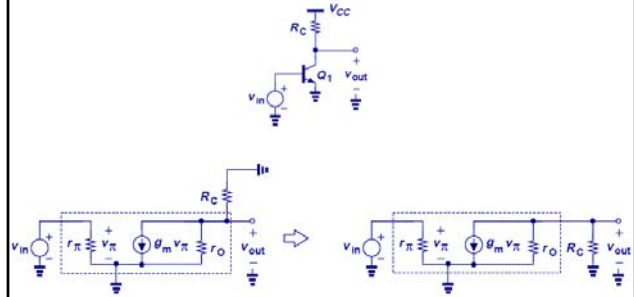
- The small signal model for PNP transistor is exactly IDENTICAL to that of NPN. This is not a mistake because the current direction is taken care of by the polarity of VBE.

EE105 Spring 2008

Lecture 4, Slide 13

Prof. Wu, UC Berkeley

Small Signal Model Example I

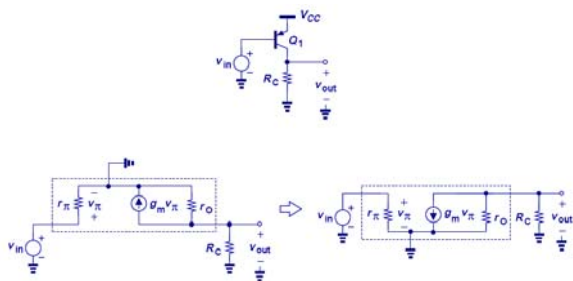


EE105 Spring 2008

Lecture 4, Slide 14

Prof. Wu, UC Berkeley

Small Signal Model Example II



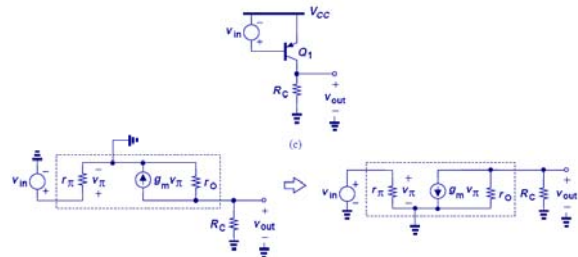
- Small-signal model is identical to the previous ones.

EE105 Spring 2008

Lecture 4, Slide 15

Prof. Wu, UC Berkeley

Small Signal Model Example III



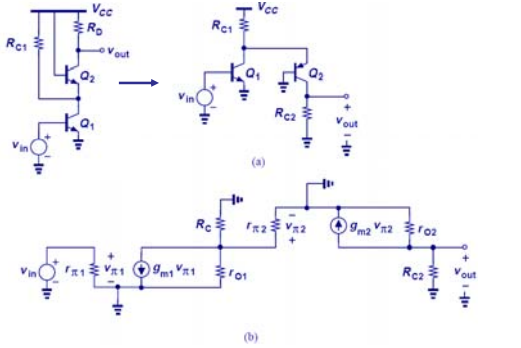
- Since during small-signal analysis, a constant voltage supply is considered to be AC ground, the final small-signal model is identical to the previous two.

EE105 Spring 2008

Lecture 4, Slide 16

Prof. Wu, UC Berkeley

Small Signal Model Example IV



EE105 Spring 2008

Lecture 4, Slide 17

Prof. Wu, UC Berkeley