

**EECS 42 Introduction to Electronics for
Computer Science
Andrew R. Neureuther**

**Lecture # 14 Circuit analysis with
dependent sources (4.1-4.3)**

A) Node Equations

B) Equivalent Sources

C) Amplifier Parameters:

Gain, R_{IN} , R_{OUT}

D) Non-Ideal Op-Amp Model

<http://inst.EECS.Berkeley.EDU/~ee42/>

Game Plan 03/17/03

Monday 03/17/04

- Monday: Circuit analysis with dependent sources (4.1-4.2)**

Wednesday 03/19/03:

- Comparators and op-amps (Comparator handout)**

Next (10th) Week: After Spring Recess

- Monday: 3/31/03 Logic with State Dependent Device 593-595, 604-605**
- Wednesday: 4/02/03 Logic Static: Voltage Transfer Characteristic 606, Handout**

Problem set #7: out Wednesday 3/12 and due at 2:30 3/19 in box in 240 Cory – basic dependant sources and Op-Amp circuits

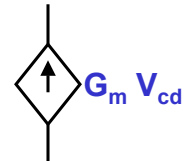
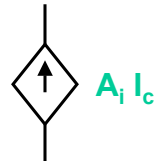
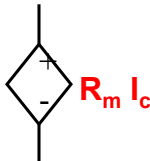
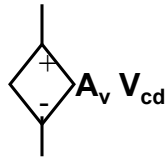
Problem set #8: Half-Set - out Monday 3/17 and due at 2:30 4/02 in box in 240 Cory – input/output impedance, comparators

The 4 Basic Linear Dependent Sources

Constant of proportionality

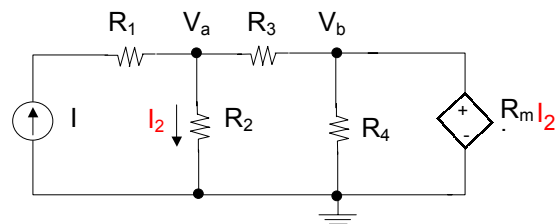
Parameter being sensed

Output

Voltage-controlled voltage source ... $V = A_v V_{cd}$ Current-controlled voltage source ... $V = R_m I_c$ Current-controlled current source ... $I = A_i I_c$ Voltage-controlled current source ... $I = G_m V_{cd}$ 

Copyright 2001, Regents of University of California

EXAMPLE OF NODAL ANALYSIS WITH DEPENDENT SOURCES



Standard technique, except an additional equation is needed if the dependent variable is an unknown current as here. Note V_b is redundant.

$$I = V_a / R_2 + (V_a - R_m I_2) / R_3 \quad \text{and} \quad I_2 = V_a / R_2$$

$$\text{Solving:} \quad I = V_a (1/R_2 + 1/R_3 - R_m / R_2 R_3)$$

$$\text{So } V_a = I R_2 R_3 / (R_2 + R_3 - R_m)$$

Copyright 2001, Regents of University of California

THEVENIN EQUIVALENT WITH DEPENDENT SOURCES

Method 1: Use V_{oc} and I_{sc} as usual to find V_T and R_T (and I_N as well)

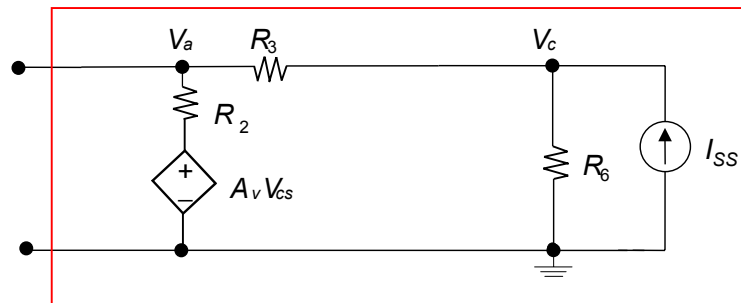
Method 2: To find R_T by the “ohmmeter method” turn off only the *independent* sources; let the dependent sources just do their thing.

See examples in text (such as Example 4.3).

This method also works when computing **incremental signals** such as a change in the source V_S (given by ΔV_S or v_S) produces a change in V_{IN} or V_{OUT} , (given by ΔV_{IN} or ΔV_{OUT} also written v_{IN} and v_{OUT}), and their ratio called the small-signal gain ($\Delta V_{OUT} / \Delta V_S$) or (v_{OUT} / v_S)

NODAL ANALYSIS WITH DEPENDENT SOURCES

Example : Find Thévenin equivalent of stuff in red box.

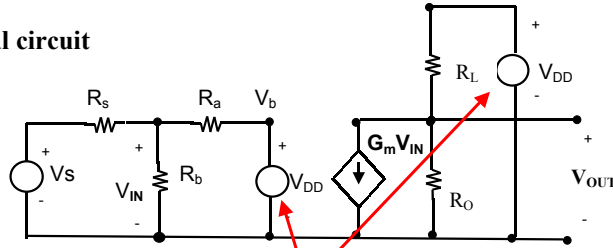


With method 2 we first find open circuit voltage (V_T) and then we “measure” input resistance with source I_{SS} turned off.

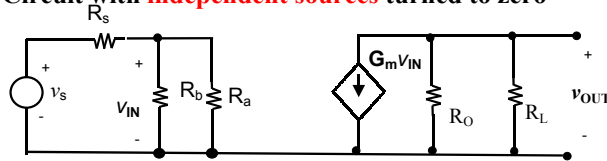
You verify the solution: $V_{TH} = \frac{I_{SS} R_6 (R_2 + A R_3)}{R_2 + R_3 + R_6 (1 - A)}$ $R_{TH} = \frac{R_2 (R_6 + R_3)}{R_2 + R_3 + R_6 (1 - A)}$

EXAMPLE CIRCUIT WITH MULTIPLE SOURCES

Original circuit

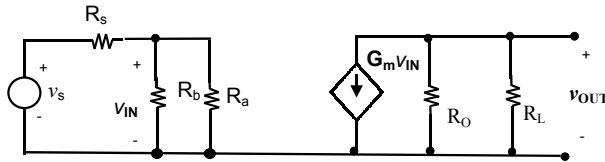


Circuit with independent sources turned to zero



Note R_L has been rotated down.

EXAMPLE CIRCUIT: GAIN = $(\Delta V_{OUT} / \Delta V_S) = (V_{OUT}/V_S)$

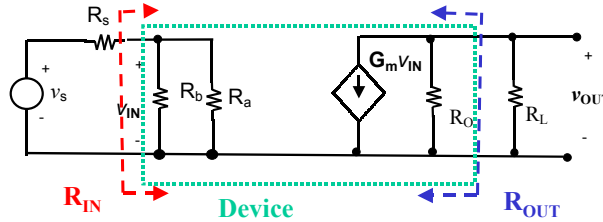


$$R_{IN} = \frac{R_a R_b}{R_a + R_b} \quad v_{IN} = \frac{R_{IN}}{R_S + R_{IN}} v_S$$

$$v_{OUT} = -G_m v_{IN} \frac{R_O R_L}{R_O + R_L} = -G_m \frac{R_{IN}}{R_S + R_{IN}} \frac{R_O R_L}{R_O + R_L} v_S$$

Input voltage divider and **output current divider** reduce the gain

EXAMPLE CIRCUIT: INPUT/OUTPUT RESISTANCE



$$R_{IN} = \frac{R_a R_b}{R_a + R_b}$$

Output does not feed back to input

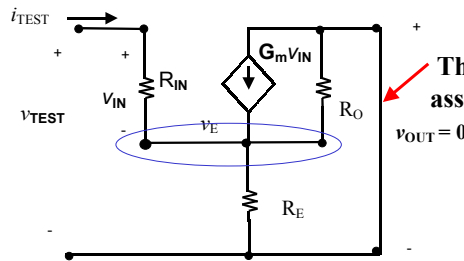
$$R_{OUT} = R_O$$

Assume $v_s = 0 \Rightarrow v_{IN} = 0 \Rightarrow$ no current in dependent source

Can circuit design improve R_{IN} and R_{OUT} or do we need better devices?

EXAMPLE CIRCUIT: INCREASED INPUT RESISTANCE

Add resistor R_E



The output has been assumed to be shorted

Analysis: apply i_{TEST} and evaluate v_{TEST}

$$v_{IN} = R_{IN} i_{TEST} \quad v_{TEST} = R_{IN} i_{TEST} + v_E$$

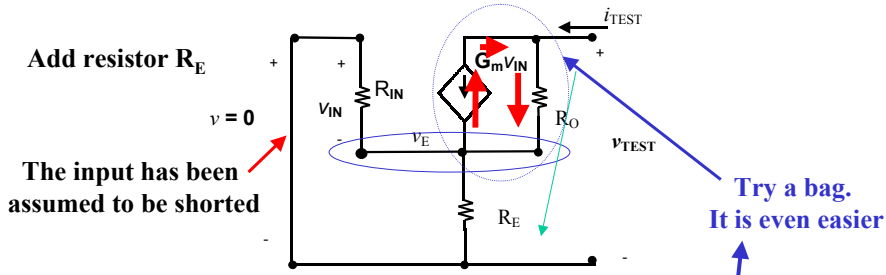
Finish this in the homework

KCL
$$\frac{v_E}{R_E} + \frac{v_E}{R_O} - i_{TEST} - G_m R_{IN} i_{TEST} = 0$$

Check for special case for R_0 infinite
$$\frac{v_{TEST}}{i_{TEST}} = R_{IN} + (1 + G_m R_{IN}) R_E$$

Intuitive Explanation: R_E puts R_{IN} on a node whose voltage increases in response to current in R_{IN} .

EXAMPLE CIRCUIT: INCREASED OUTPUT RESISTANCE



Add resistor R_E

The input has been assumed to be shorted

Analysis: apply i_{TEST} and evaluate v_{TEST}

Unknowns: i_{TEST} , v_{TEST} , v_{IN} , v_E

Need 3 equations to find the ratio of i_{TEST} / v_{TEST}

$v_{IN} = -v_E$ and is **not zero!**

KCL at v_E
KVL at v_{OUT}

Intuitive Explanation: $G_m V_{IN}$ burps current which has to also go through R_O . This raises v_{TEST} and the output impedance v_{TEST} / i_{TEST}

Finish this in the homework

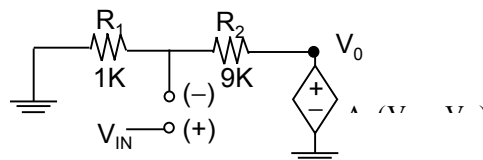
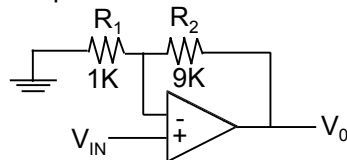
Try a bag. It is even easier

NON-IDEAL OP-AMPS

JUST ANOTHER CASE OF ANALYSIS WITH DEPENDENT SOURCES

Example:

Circuit (assume $R_{IN} \cong \infty$)



Analysis: **Outline your circuit analysis strategy here.**

Hint: 1) Find V_- in terms of V_0 , 2) plug into expression for V_0 and then 3) solve for V_0 which appears on both sides of the equation.

Answer:

$$V_0 = V_{IN} \frac{A(R_1 + R_2)}{(A + 1)R_1 + R_2} \cong V_{IN} \frac{R_1 + R_2}{R_1} = 10V_{IN}$$

if $A \rightarrow \infty$