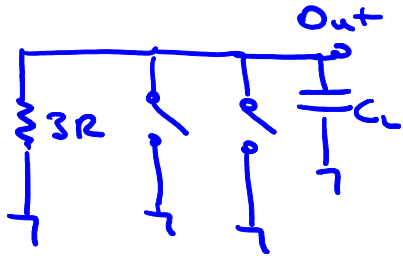


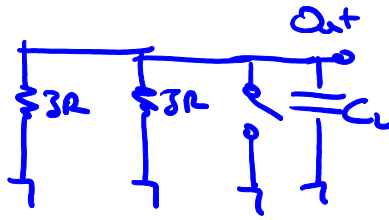
# EECS 251 - Homework 7 Solutions

①

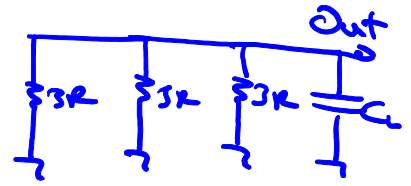
1)



(a)



(b)



(c)

$$t_{p_a} = \ln(2) \cdot 3R \cdot C_L = 3 \cdot \ln(2) \cdot RC_L$$

$$t_{p_b} = \ln(2) \cdot \frac{3R}{2} \cdot C_L = 1.5 \cdot \ln(2) \cdot RC_L$$

$$t_{p_c} = \ln(2) \cdot \frac{3R}{3} \cdot C_L = \ln(2) \cdot RC_L$$

2)

